

HOTnote

Perception CSI: Seismic Measurement

The Customer

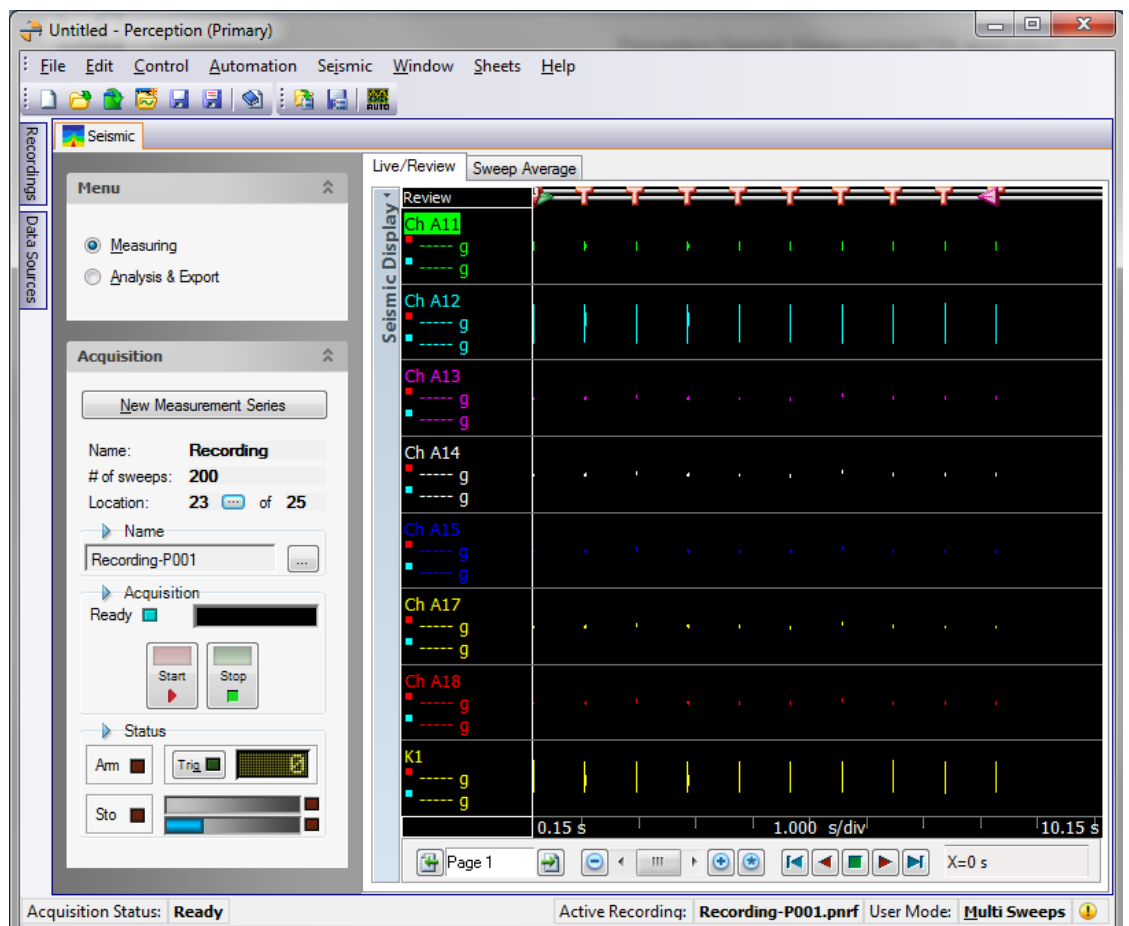
A research institute in Germany doing seismic measurements

The Application

The customer does geo-scientific and geotechnical research using seismic measurements.

The Problem

The customer needs easy to use software for doing seismic measurements and analysis. All needed functionality should be gathered in one simple user interface. The application should use a custom defined naming convention for the recordings. A recording contains multiple sweeps; the program should calculate and show the average of all these sweeps per channel. For compatibility reasons with old software the customer also wants an export in WFT format. The application should be able to export either a complete recording, or a single sweep or the average of all measured sweeps.



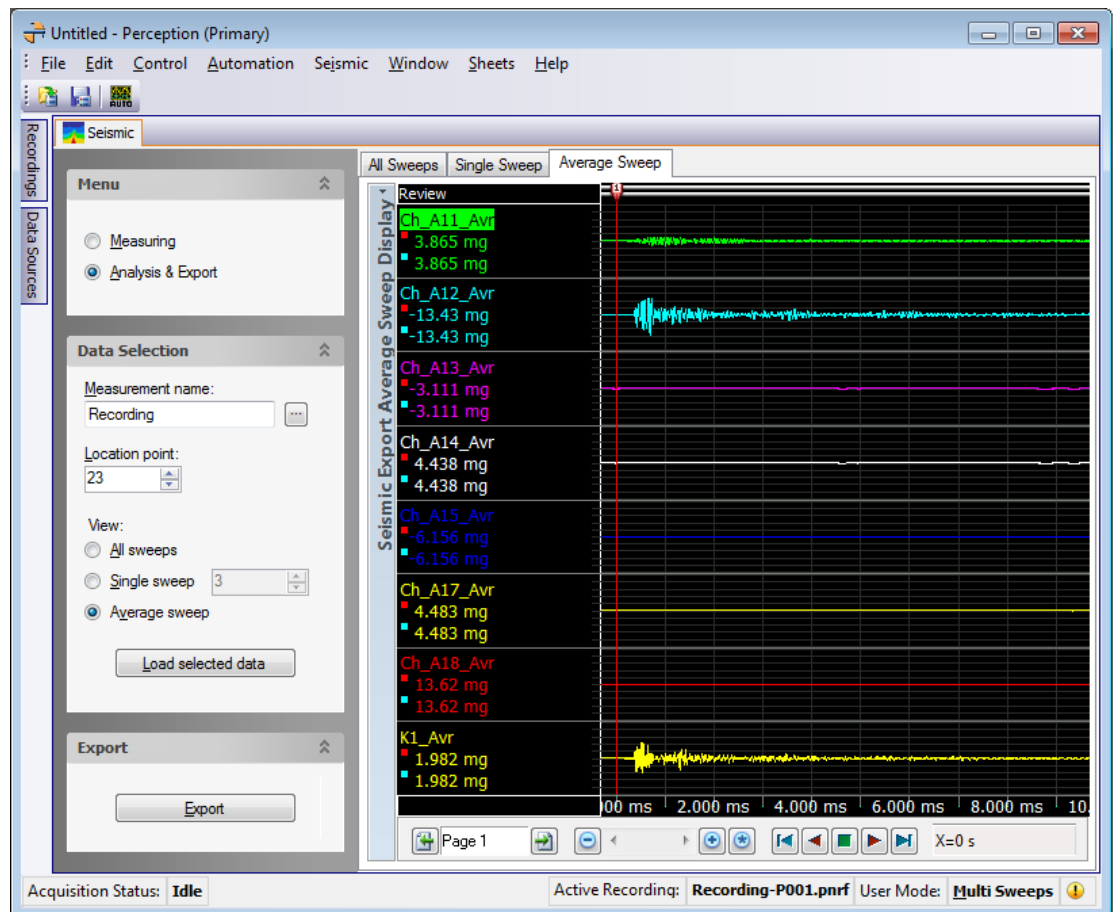
The Measuring subpage, used to simplify the data acquisition

HOTnote

The “General” Solution A GEN5i with three 32 Channels boards and a CSI program extension of Perception.

The Missing Link Standard software does not support the wanted customer defined recording naming convention. It is also not able to calculate the average of all sweeps in a recording. Using the standard software the operation is more complex.

The CSI Solution With CSI it is possible to add specific dedicated software to the standard Perception program. A new sheet has been added; this sheet is an integrated part of Perception and contains its own site menu and subpages. The first subpage is used for doing the measurements and the second subpage is used for analysis and export of the measured or calculated data.



The Analysis and Export subpage, used to do the analysis and export of the recorded data

HBM GmbH

www.hbm.com

Email: info@hbm.com

Tel. +49 6151 803-0

Fax +49 6151 803-9100

measure and predict with confidence

