

C16/M

Weighing module for 20 t ... 200 t

SPECIAL FEATURES

- Equipped with a self-restoring C16 pendulum load cell of class D1, C3 or C4 according to OIML R60
- Stay rod for taking up horizontal forces
- Can be fitted with an anti-liftoff device (see Accessories)
- Maintenance-free
- Minimal construction height for space-saving installation
- Easy mounting
- Two versions available:
 - Galvanized
 - Stainless steel
- Explosion protection versions as per ATEX and IECEx, FM (US/CA)

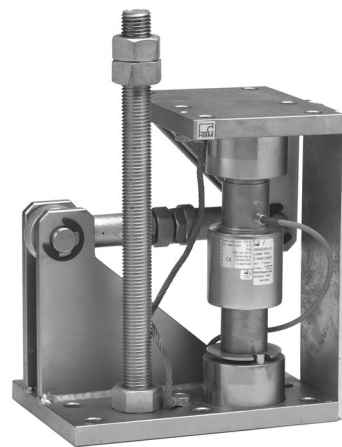
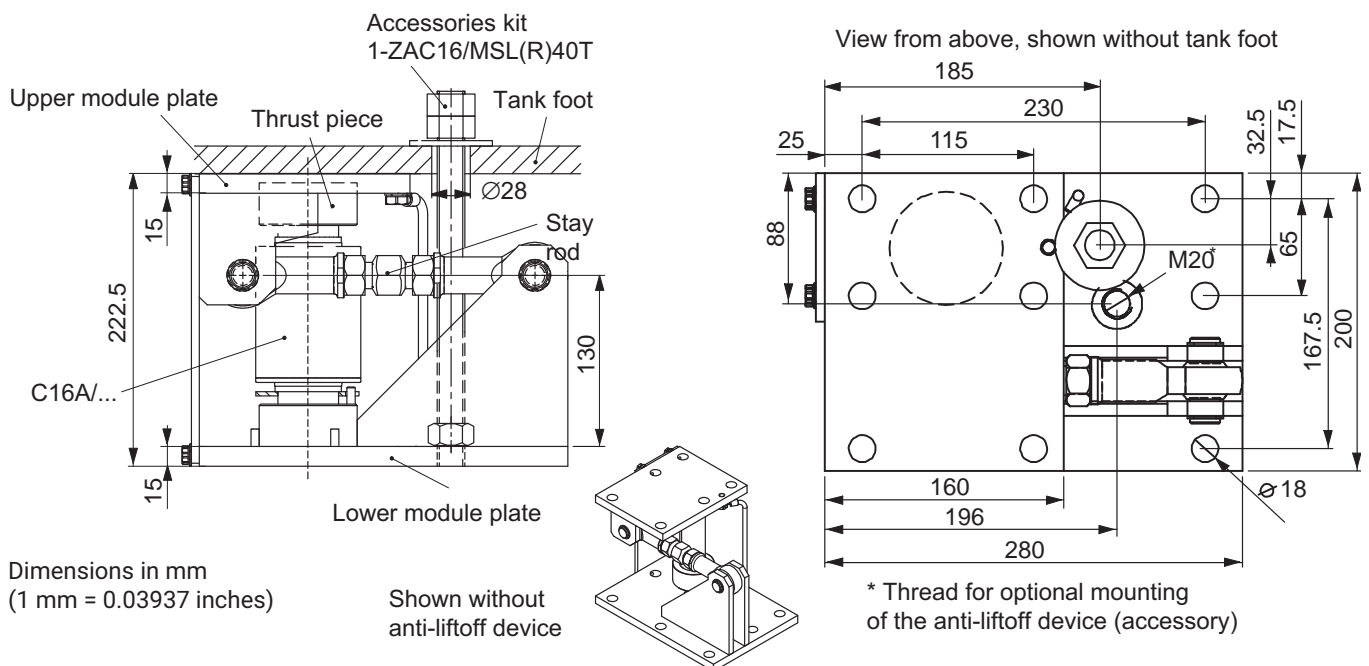


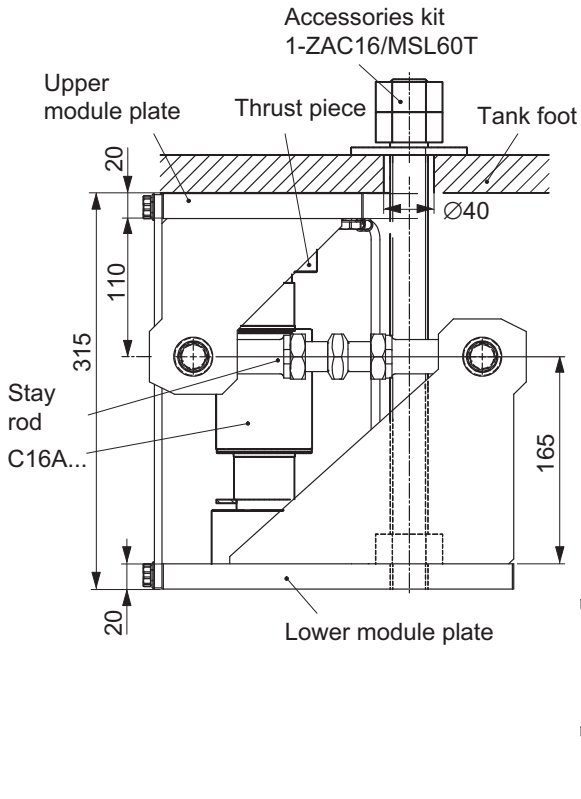
Fig. with accessories kit 1-ZAC16/MSL60T

DIMENSIONS

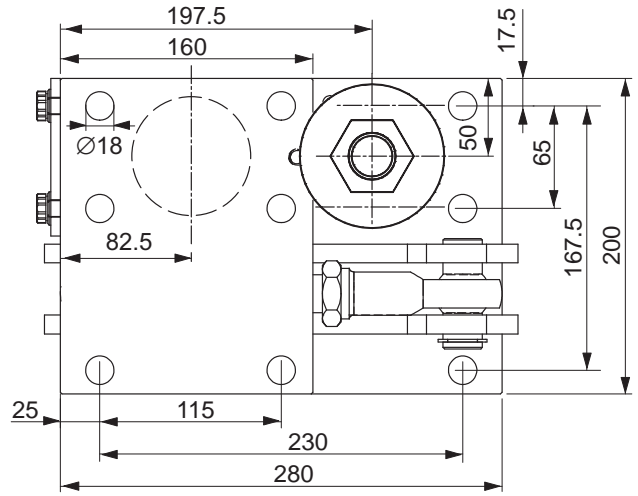
C16/M1LB20 t ... 40 t



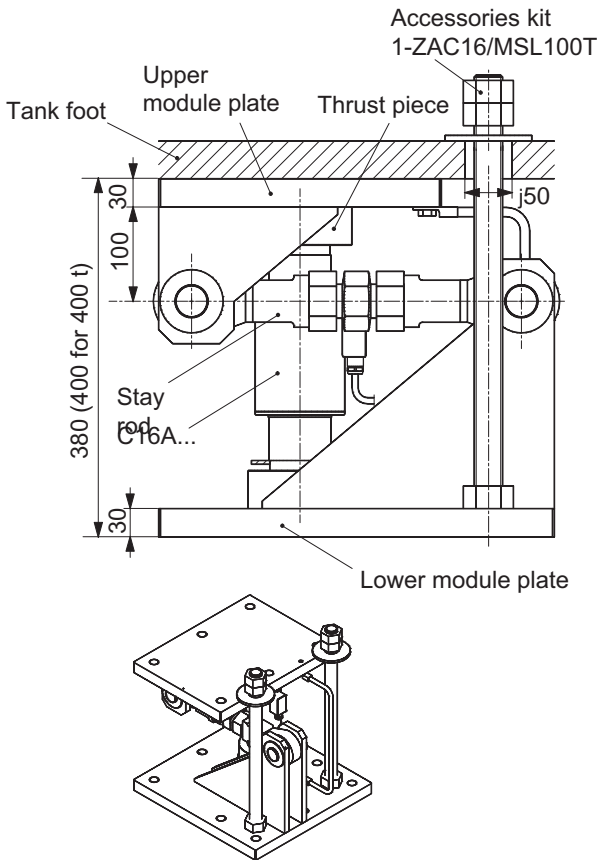
C16/M1LB60 t



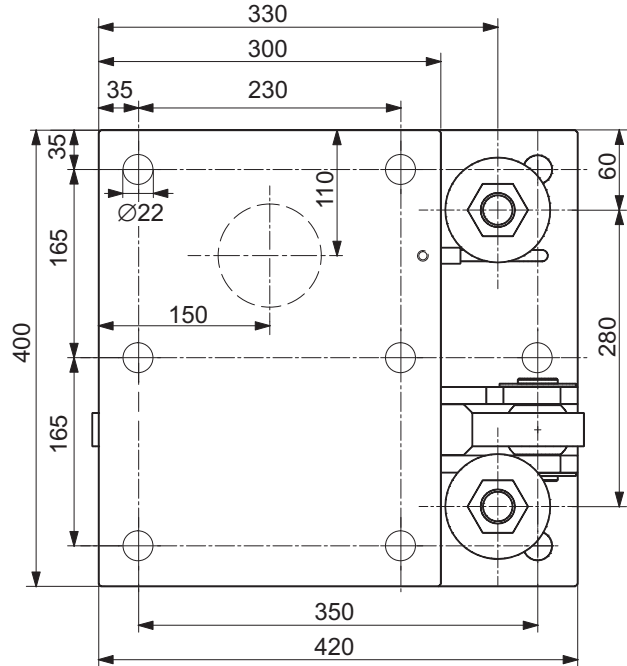
View from above, shown without tank foot



C16/M1LB100 t ... 200 t



View from above, shown without tank foot



SPECIFICATIONS OF THE C16/M... WEIGHING MODULE

Maximum capacity	t	20	30	40	60	100	200
Limit load	% of maximum capacity	150					
Restoring force (at 1 mm lateral displacement transverse to the stay rod direction)	% of applied load	0.49	0.76	0.94	0.52	0.48	0.81
Max. permissible lateral displacement transverse to the stay rod axis	mm	± 4.0				± 5.0	
Max. permissible horizontal force in the stay rod direction	kN	50			100	150	
Max. permissible liftoff force (when using an anti-liftoff device ¹⁾)	kN	80			120	240	
Material		Galvanized or stainless steel ²⁾					
Weight, approx. (version-dependent, including load cell)	kg	20			55	105	107

¹⁾ The anti-liftoff device, e.g. a threaded rod (see Accessories), can be screwed into the threaded hole provided.

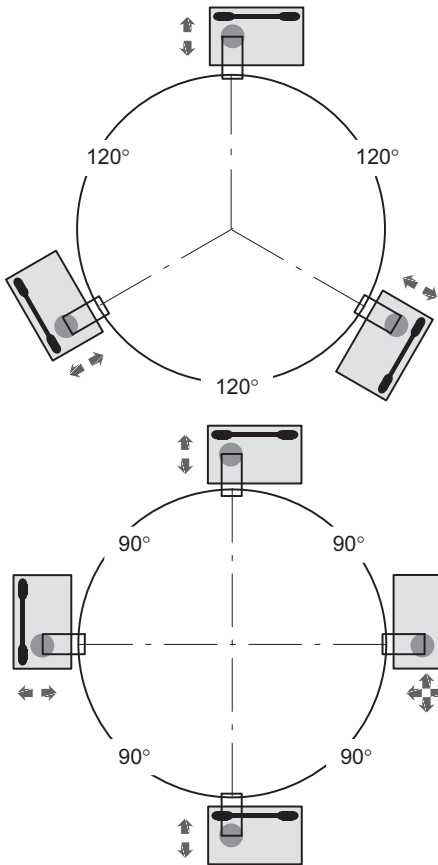
²⁾ As per EN 10088-1.




For more information on the corresponding load cells, see the C16A... data sheet

OPTIONS FOR C16/M

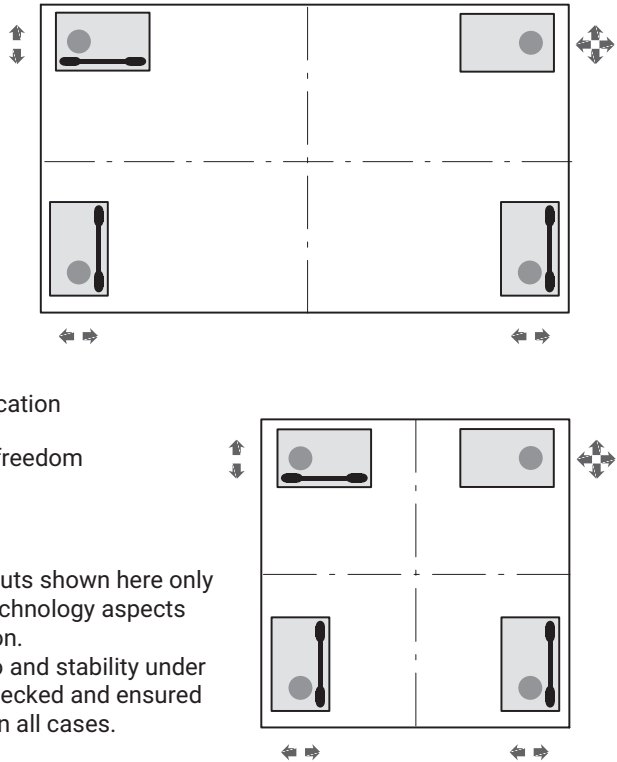
- Explosion protection versions as per IECEx, ATEX and FM (US/CA)
 - AI1/21 ATEX+IECEX+FM zone 1/21, intrinsically safe;
 - ATEX/IECEX: II 2G Ex ia IIC T6/T4 Gb + II 2D Ex ia IIIC T125°C Db;
 - FM(US/CA): Class I zone 1 AEx/Ex ia IIC T4 Gb + zone 21 AEx/Ex ia IIIC T125°C Db;
 - FM(US): Class I, II, III Division 1, Groups A, B, C, D, E, F, G T4
 - AI2/21 ATEX+IECEX zone 2/21, not intrinsically safe;
 - ATEX/IECEX: II 3G Ex ec IIC T6/T4 Gc + II 2D Ex tb IIIC T125°C Db
- Overtoltage protection
- Cable length 20 m (maximum capacity (E_{max}) = 20 t + 30 t)
- Cable length 40 m (maximum capacity (E_{max}) = 20 t ... 100 t)
- 20 m cable with braided wire (maximum capacity (E_{max}) = 20 t ... 60 t)

INSTALLATION EXAMPLES FOR WEIGHING MODULES WITH STAY RODS



-  Stay rod
-  Load application
-  Degree of freedom

Attention:
The bearing layouts shown here only take weighing technology aspects into consideration. The loading ratio and stability under load must be checked and ensured by the operator in all cases.



ACCESSORIES (TO BE ORDERED SEPARATELY)

Each for two weighing modules (see dimensions)

1-ZAC16/MSL40T, for C16/MSL20 t ... 40 t, comprising:

- 1 threaded rod M20x1000¹⁾, **galvanized**
- 6 hexagon nuts M20 DIN 934, galvanized
- 2 washers DIN 9021, Ø21 mm, galvanized

1-ZAC16/MSLR40T, for C16/MSLR20 t ... 40 t, comprising:

- 1 threaded rod M20x1000¹⁾, **stainless**
- 6 hexagon nuts M20 DIN 934, stainless
- 2 washers DIN 9021, Ø21 mm, stainless

1-ZAC16/MSL60T, for C16/MSL60 t, comprising:

- 1 threaded rod M30x1000¹⁾, **galvanized**
- 6 hexagon nuts M30 DIN 934, galvanized
- 2 washers DIN 9021, Ø31 mm, galvanized

1-ZAC16/MSL100T, for C16/MSL100 t ... 200 t, comprising:

- 4 threaded rods M30x1000¹⁾, **galvanized**
- 12 hexagon nuts M30 DIN 934, galvanized
- 4 washers DIN 9021, Ø31 mm, galvanized

¹⁾ The customer must adapt the threaded rods to the particular installation situation.

Hottinger Brüel & Kjaer GmbH

Im Tiefen See 45 · 64293 Darmstadt · Germany
Tel. +49 6151 803-0 · Fax +49 6151 803-9100
www.hbkworld.com · info@hbkworl.com

Subject to modifications. All product descriptions are for general information only. They are not to be understood as a guarantee of quality or durability.