

Fixed bearings

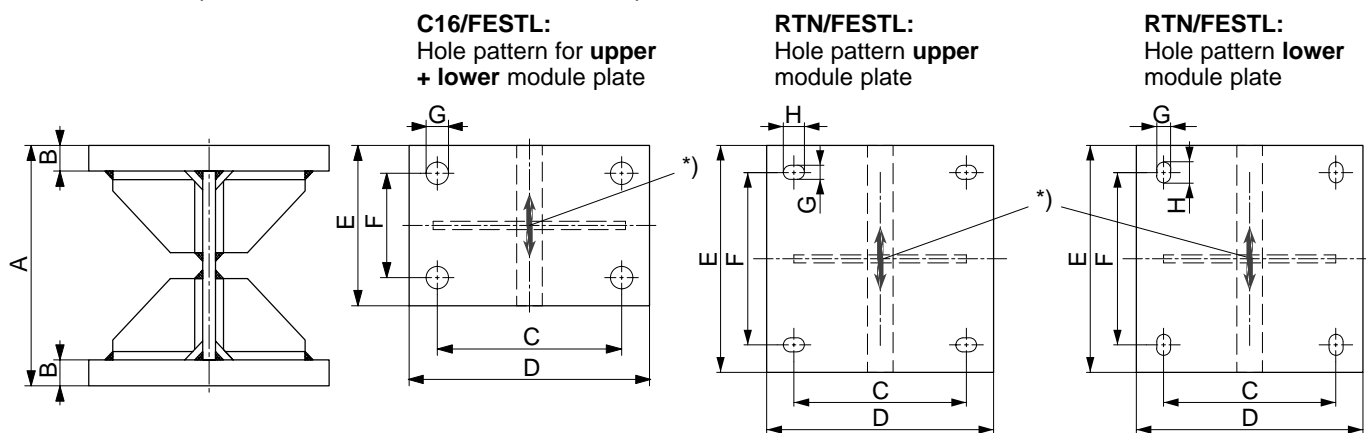
For weighing modules
C16/MSL... and
RTN/M2L...



Special features

- Low cost add-on for weighing systems used to monitor filling levels
- For taking up horizontal forces
- Easy to install
- Can also be used as a dummy
- Material: galvanized steel
- Certified by Technical Inspection Agency (TÜV; according to DIN 18800)

Dimensions (in mm; 1 mm= 0.03937 inches)



*) = Direction for taking up horizontal forces

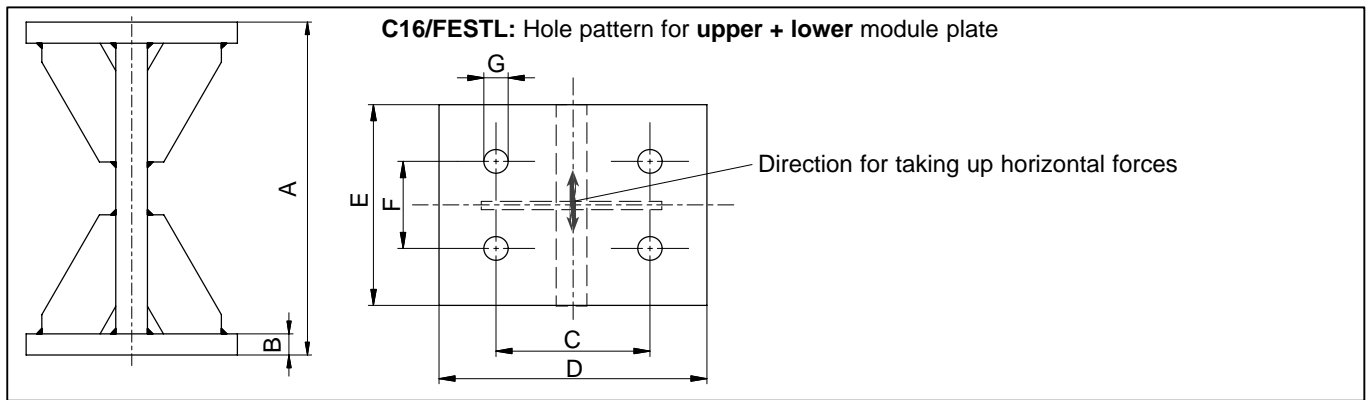
Type (Ordering-No.)	Module capacities	A	B	C	D	E	F	G	H	max. perm. horizont. force ³⁾
1-RTN/FESTL.4.7T ¹⁾	1 t ... 4.7 t	110	8	100	130	140	100	15	20	20 kN
1-RTN/FESTL.22T ²⁾	10 t ... 22 t	150	10	140	180	180	140	18	22	30 kN
1-RTN/FESTL.33T	33 t	192	12	200	270	250	200	22	26	50 kN
1-C16/FESTL.40T	20 t ... 40 t	222.5	15	115	150	130	65	18	-	50 kN

¹⁾ Can also be used with C2A/M1(L)BR5T (1...5 t) weighing modules

²⁾ Can also be used with C2A/M1(L)BR10T (10 t) weighing modules

³⁾ These specifications are based on DIN 18800

Dimensions (in mm; 1 mm= 0.03937 inches) Continuation



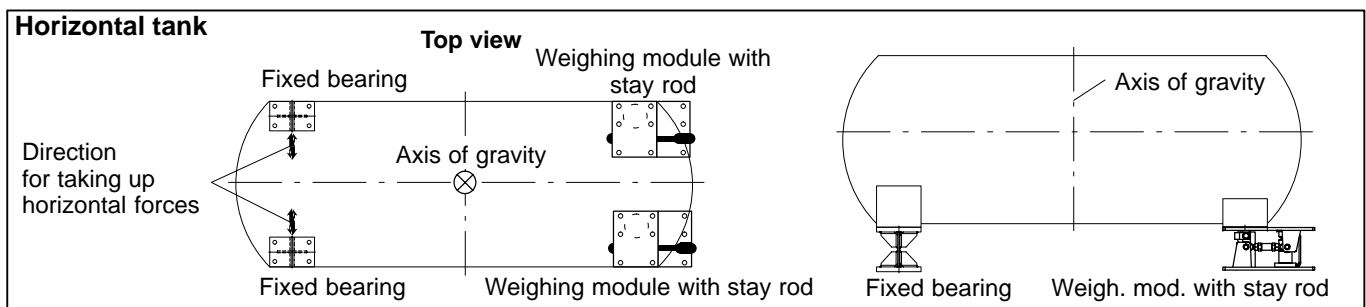
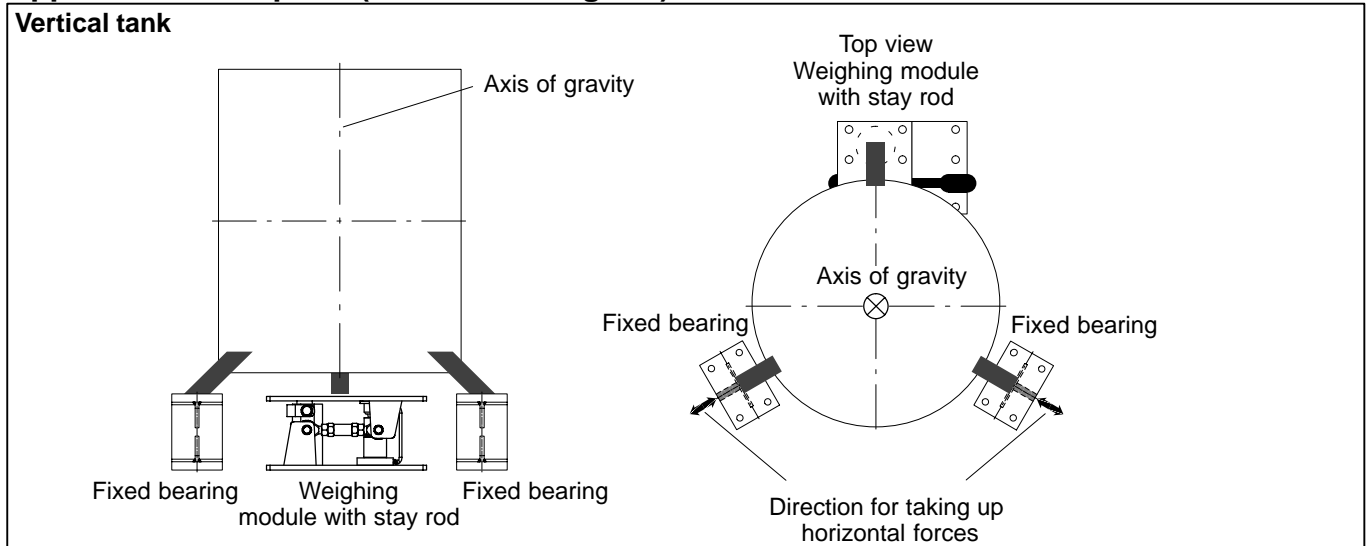
Type (Ordering-No.)	Module capacities	A	B	C	D	E	F	G	max. perm. horizont. force ¹⁾
1-C16/FESTL.60T	60 t	315	20	115	200	190	65	18	100 kN
1-C16/FESTL.200T	100 t ...200 t	380	30	230	300	235	165	22	150 kN

¹⁾ These specifications are based on DIN 18800

Application

Fixed bearings are mainly provided for supporting and horizontally restraining tanks. In combination with weighing modules, they are used for simple weighing tasks, e.g. filling level measurements, where the position of the center of gravity remains the same irrespective of the current filling level. Fixed bearings allow savings to be made in respect of load cells and control arrangements.

Application examples* (schematic diagram)



* The application examples shown here are not suitable for use in all installing conditions. In each case the static, dynamic and thermal loads must be checked and the arrangement must be adjusted accordingly.

Modifications reserved.
All details describe our products in general form only. They are not to be understood as express warranty and do not constitute any liability whatsoever.

Hottinger Baldwin Messtechnik GmbH

Im Tiefen See 45, D-64293 Darmstadt, Germany
Tel.: +49 6151 803-0 Fax: +49 6151 803 9100
Email: support@hbm.com Internet: www.hbm.com



measurement with confidence