

# HOTnote

## Perception CSI: Sensor Barcode Reader

### The Customer

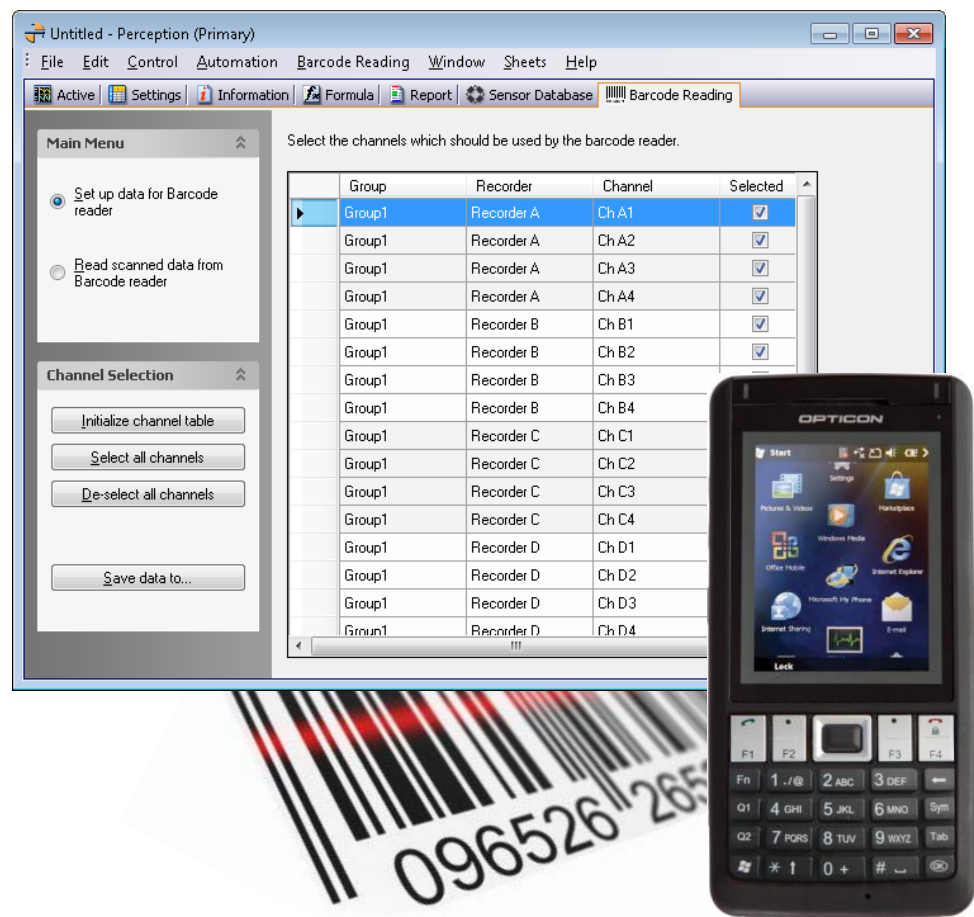
An aeroplane manufacturer

### The Application

The customer does multichannel voltage and current measurements.

### The Problem

The customer needs user friendly software to access sensor data from his own sensor database; he also wants to use a barcode reader for scanning the barcodes directly from the sensors and then link these sensors via the barcode reader to the appropriate acquisition channel.



The Barcode Reading subpage and the intelligent barcode reader

# HOTnote

## The Solution

A Genesis High Speed data acquisition system using Perception with a CSI program extension. An intelligent Barcode Reader.

## The Missing Link

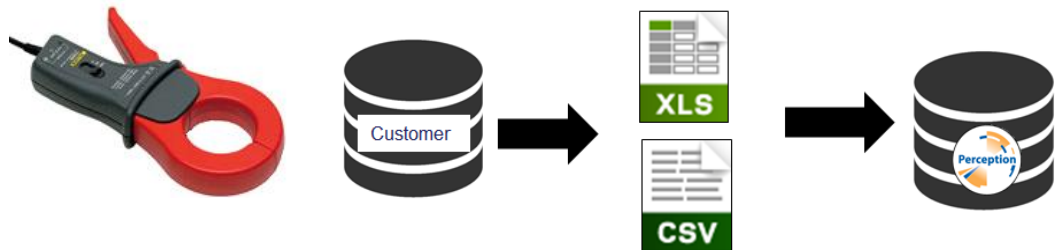
Standard software is not able to import the customer sensor data. The standard software does not work with sensor barcodes.

## The CSI Solution

With CSI it is possible to add specific dedicated software to the standard Perception program. A custom-made sensor importer module has been created, a new sheet has been added; this sheet is an integrated part of Perception and takes care of the communication with the barcode reader.

A special program has been developed for the barcode reader; via this program it is possible to use the barcode reader as a standalone device. The Sensor barcodes are read and via a simple menu it is possible to link the sensor to one of the available acquisition channels in an easy and intuitive way.

	A	B	C	D	E	F	G	H	I	J	K	L	M	N
1	Equip Type	Father Equip Type	Assembly Date	PN	SN	Short name	Maintenance	Comacola	Validity	Calibrated	Fournisseur	Ratio	Gamme	Unité
2	BOUCLE DE ROGOWSKI	ELEC METRO	15 November 2012 15:22:35	3000S FLEX-24	16490023	Sensor A	Maintened	3.932.221.0019	29-1-2012	29-1-2012	FLUKE	100	840	A
3	SONDE DIFFERENTIELLE DE TENSION	ELEC METRO	12 June 2012 09:28:11	S19000	PG 01	Sensor B	Maintened	3.932.221.0246	1-7-2014	1-7-2013	WAVETEK	200	2000	V
4	PINCE AMPERETRIQUE	ELEC METRO	12 June 2012 09:28:11	M1.UB 20A/1V	PG 39	Sensor C	Maintened	3.932.223.0138	1-7-2014	1-7-2013	WAVETEK	20	60	A



Source	Equip Type	Father Equip T	Assembly Date	PN	SN	Short name	Maintenan.	Comacola	Validity	Calibrated	Fournisseur	Ratio	Gamme	Unit
1	BOUCLE DE ROGOWSKI	ELEC METRO	15 November 2012 15:22:35	3000S FLEX-24	16490023	Sensor A	Maintened	3.932.221.0019	29-1-2012 0:00:00	29-1-2012 0:00:00	FLUKE	100	840	A
2	SONDE DIFFERENTIELLE DE TENSION	ELEC METRO	12 June 2012 09:28:11	S19000	PG 01	Sensor B	Maintened	3.932.221.0246	1-7-2014 0:00:00	1-7-2013 0:00:00	WAVETEK	200	2000	V
3	PINCE AMPERETRIQUE	ELEC METRO	12 June 2012 09:28:11	M1.UB 20A/1V	PG 39	Sensor C	Maintened	3.932.223.0138	1-7-2014 0:00:00	1-7-2013 0:00:00	WAVETEK	20	60	A

The Sensor data import

