

RELEASEnotes

FASTpress Suite

Thank you for choosing HBM's Process-Controller series MP85A. and the related software FASTpressSuite.

Your feedback is important for HBM. If you encounter any problems or suggestions to improve the FASTpressSuite software, please let us know.

You can contact our team of support engineers directly at <http://www.hbm.com/support>

PME-Assistant and PME-Firmware-Loader is available as free download on www.hbm.com/support .

Please download the FASTpress Suite-CD to get the latest Software and Applications.
<http://www.hbm.com/en/menu/support/software-firmware-downloads/industrial-amplifiers/>

Version Overview

FASTpress Suite - CD V152

PME-Assistant (Version: 3.4.R208)

No news

PME-Firmware Loader V1.1.7

No news

NEW EASYteach (Version: 1.0.5.10)

No news

MP85A-Toolkit V.1.0 R5.12

No news

EASYmonitor CE V.1.1 R1.1:

No news

I-P.M. data conversion V1.1:

No news

NEW INDUSTRYmonitor (Version: 1.2.1.22)

Bug-Fixes:

- Graphics of Tolerance-windows corrected, who are relative in Y-direction to Window2

RELEASEnotes

FASTpress Suite - CD V151

PME-Assistant (Version: 3.4.R208)

- Help-files updated: Don't use evaluation mode "Tolerance band" and "Envelope curve" for processes with returning X-values to prevent wrong evaluations.

PME-Firmware Loader V1.1.7

No news

NEW EASYteach (Version: 1.0.5.10)

No news

MP85A-Toolkit V.1.0 R5.12

No news

EASYmonitor CE V.1.1 R1.1:

No news

I-P.M. data conversion V1.1:

No news

NEW INDUSTRYmonitor (Version: 1.2.1.18)

- New: The User.config file is now stored in the folder C:\ProgramData\HBM
The directory C:\ProgramData\HBM can be hidden. To enable the display in the Windows explorer, the "Show Hidden Folders" setting must be clicked under "System View / Folder Options" in the View tab.
- Help-files updated: Don't use evaluation mode "Tolerance band" and "Envelope curve" for processes with returning X-values to prevent wrong evaluations.

FASTpress Suite - CD V150

PME-Assistant (Version: 3.4.R206)

No news

PME-Firmware Loader V1.1.7

No news

NEW EASYteach (Version: 1.0.5.10)

No news

RELEASEnotes

MP85A-Toolkit V.1.0 R5.12

New: (only internal update for HBM production)

EASYmonitor CE V.1.1 R1.1:

No news

I-P.M. data conversion V1.1:

No news

NEW INDUSTRYmonitor (Version: 1.2.1.10)

New:

- Windows 7: start button hidden to prevent unauthorized access

Bug-Fixes:

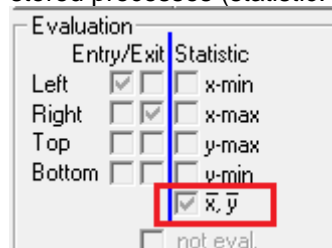
- Windows 7: bugfix on user-right access
- Windows 7: performance update on graphical display of each dialog (suppresses flicker during change of dialogues))

FASTpress Suite - CD V149

NEW PME-Assistant (Version: 3.4.R206)

New:

- Visualization of mean-values for min/max tolerance-windows in actual and from stored processes (statistic: mean for X and Y has to be activated).



Bug-Fixes:

- Text correction for tolerance-windows in sequence evaluation.

PME-Firmware Loader V1.1.7

No news

NEW EASYteach (Version: 1.0.5.10)

New:

- Version suitable now for Win7/ 64Bit OS.

MP85A-Toolkit V.1.0 R5.10

No news

RELEASEnotes

EASYmonitor CE V.1.1 R1.1:

No news

I-P.M. data conversion V1.1:

No news

NEW INDUSTRYmonitor (Version: 1.2.1.8)

New:

- Visualization of mean-values for min/max tolerance-windows in actual and from stored processes (statisc: mean for X and Y has to be activated).

Bug-Fixes:

- Smaller Correction in texts and buttons-text.
- Correction of autostart-plugins (was starting twice).

FASTpress Suite - CD V147

No news, only small textual changes.

FASTpress Suite - CD V146

NEW PME-Assistant (Version: 3.4.R201)

New:

- Implementation of automatic Peak-CAN-Driver update from versiopn 2.x to version 3.x during the installation. This can be useful, when new new multicore PC´s have be blocked after installing the Peak-Can-driver version 2.x.
>>Then the PC has to be re-started in the secured-mode with admin-rights and the installation has to be done with this new version.

PME-Firmware Loader V1.1.7:

No news

NEW EASYteach (Version: 1.0.4.10)

No news

MP85A-Toolkit V.1.0 R5.9:

No news

EASYmonitor CE V.1.1 R1.1:

No news

RELEASEnotes

I-P.M. data conversion V1.1:

No news

NEW INDUSTRYmonitor (Version: 1.2.1.2)

No news

FASTpress Suite - CD V145**NEW PME-Assistant (Version: 3.4.R101)**

No news

PME-Firmware Loader V1.1.7:

No news

NEW EASYteach (Version: 1.0.4.10)

No news

MP85A-Toolkit V.1.0 R5.9:

No news

EASYmonitor CE V.1.1 R1.1:

No news

I-P.M. data conversion V1.1:

No news

NEW INDUSTRYmonitor (Version: 1.2.1.2)

Bug-Fixes:

- Overview graphic was frozen after reconnect / powered down of the MP85A modules.

FASTpress Suite - CD V144**NEW PME-Assistant (Version: 3.4.R101)**

RELEASEnotes

New:

- Compatibility to Microsoft Windows 7 (64/ 32 bit)
- Implementation of new PEAK-drivers for CAN, compatible to Windows 7 (64/ 32 bit)
- New Gigasoft graphic-component with advanced speed and graphical bug-fixes
- Visu: IO-curves with light-green background.
- Yellow LED in graphic-window during measurement
- Update of the Online- and PDF-Help files

Bug-Fixes:

- Start-Button with empty device-list
- At process-no# 0 tolerance window adjustment are now possible
- Elimination of TCP/IP-error-message during write access to SD-memory-card

PME-Firmware Loader V1.1.7:

New:

- Implementation of new PEAK-drivers for CAN, compatible to Windows 7 (64/ 32 bit)
- Implementation of Firmware-Blocking-Function for MP85A-Devices with FW2.22 and higher

NEW EASYteach (Version: 1.0.4.10)

No news.

MP85A-Toolkit V.1.0 R5.9:

New:

- Compatibility to Microsoft Windows 7 (64/ 32 bit)

Bug-Fixes:

- Correction of curve-display for the MP85A (DP)-S EASYswitch versions.

EASYmonitor CE V.1.1 R1.1:

No news.

I-P.M. data conversion V1.1:

New:

- Implementation of engl. Software language
- Smaller graphical corrections
- Update of the PDF-Help files

NEW INDUSTRYmonitor (Version: 1.2.1.1)

New:

- Compatibility to Microsoft Windows 7 (64/ 32 bit)
- New Gigasoft graphic-component with advanced speed and graphical bug-fixes

RELEASEnotes

- Visu: IO-curves with light-green background.
- Different colors of the dialogs when leaving the IM (close IM – store PS in no.31 to restart with same settings).
- Update of the Online- and PDF-Help files

Bug-Fixes:

- Start-message stays during the complete software-start-up
- Elimination of indication of 'switch Point values' in the table for hap tic-windows
- Correction of Data-storage into the right sub-folders, when the INDUSTRYmonitor is started and MP85A are already storing data (curves/results); (data-storage did run in a default directory).
- Change from normal Threads to Threadpool to prevent that the PC-memory runs over (Microsoft .Net error).
- Implement IM-Process termination to get a clear closing operation for the IM without having the IM running as background-process.
- If FW delivers a negative process-status (whitch is not valuable), IM stays stabile.
- Improved Form-handling (switch from MULTImonitor to EASYmonitor and back) to prevent a PC-Memory blocking (this caused big loss of performance).
- Fmax and Fmin had wrong number of decimal points.
- IM waits for empty curve-memory in the MP85A to proved data-storage (curves/results) in 2 different directories, when switching to a new directory.
- IM uses advanced command: sdo (2950/40=suppress process-start (also from PLC)) to prevent, that parameter-set-changing collide the right entry and storage of the parameters.
- After change of Parameter set (or Fitting Point in BPM), the new evaluation-Criteria (Tol.Windows or Tol.band) gets indicated and old process-curve is deleted.

FASTpress Suite - CD V141

NEW PME-Assistant (Version: 3.3.R102)

New:

- Visu: IO-curves with light-green background.
- Yellow LED in graphic-window during measurement

Bug-Fixes:

- Start-Button with empty device-list
- At process-no# 0 tolerance window adjustment are now possible

PME-Firmware Loader V1.1.7:

New:

- Implementation of Firmware-Blocking-Function for MP85A-Devices with FW2.22 and higher

NEW EASYteach (Version: 1.0.4.10)

No news.

MP85A-Toolkit V.1.0 R5.8:

RELEASEnotes

Only internal clearing work.

EASYmonitor CE V.1.1 R1.1:

No news.

NEW INDUSTRYmonitor (Version: 1.2.0.3)

New:

- Visu: IO-curves with light-green background.
- Different colors of the dialogs when leaving the IM (close IM – store PS in no.31 to restart with same settings).

Bug-Fixes:

- Correction of Data-storage into the right sub-folders, when the INDUSTRYmonitor is started and MP85A are already storing data (curves/results); (data-storage did run in a default directory).
- Change from normal Threads to Threadpool to prevent that the PC-memory runs over (Microsoft .Net error).
- Implement IM-Process termination to get a clear closing operation for the IM without having the IM running as background-process.
- If FW delivers a negative process-status (which is not valuable), IM stays stabile.
- Improved Form-handling (switch from MULTImonitor to EASYmonitor and back) to prevent a PC-Memory blocking (this caused big loss of performance).
- Fmax and Fmin had wrong number of decimal points.
- IM waits for empty curve-memory in the MP85A to proved data-storage (curves/results) in 2 different directories, when switching to a new directory.
- IM uses advanced command: sdo (2950/40=suppress process-start (also from PLC)) to prevent, that parameter-set-changing collide the right entry and storage of the parameters.
- After change of Parameter set (or Fitting Point in BPM), the new evaluation-Criteria (Tol.Windows or Tol.band) gets indicated and old process-curve is deleted.

FASTpress Suite - CD V140

NEW PME-Assistant (Version: 3.3.R101)

New:

- Visu: IO-curves with green background
- Improvement to Microsoft Windows7 (32bit) comparability
- Implementation of functions (FW **2.22 in the MP85A is needed!!!**):
 - Set dig. out to actual number of flash- parameters (binary count)
 - Set.dig.out when PS loading is ready (than MP85A is ready for next process)
 - Set Heartbeat (Watchdog) to dig. out
 - Firmware-update on MP85A can be allowed/forbidden (selectable)
 - Each process can be stored with a on R-file on memory-card or PC

RELEASEnotes

- Reset/Backup of Flash parameter-sets (XML-format) to/from PC
- Clearance of IO/NIO-signals when the process is started (selectable)
- All 8 limit-switches can be selected for IO/NIO-evaluation Visu in: process-curve, last results, stored processes
- FiFo-buffer on memory-card for process-curves/results 1.000/10.000 selectable
- Refresh-function in table for selection of stored processes

Bug-Fixes:

- Code-entry corrected for Passcode
- Sub-Menu storage to store parameter-set on PC
- Menu-correction for storing XML-parameter-sets in MP85A-flash

PME-Firmware Loader V1.1.4:

New:

- PME-Firmware-Loader is no longer part of the PME-Assistant, and can be installed separately from the FASTpress Suite CD.

NEW EASYteach (Version: 1.0.4.10)

No news.

MP85A-Toolkit V.1.0 R5.7:

New:

- Implementation of the new function of the new MP85A firmware 2.20 to 2.22

EASYmonitor CE V.1.1 R1.1:

New:

- New file-interface implemented which allows modifying and re-loading device-settings via an xml-FILE from different application (e.g. WinCC) into a connected MP85A(DP) easily.
 - 3 new comments implemented in the EASYmonitor CE application, which are monitored each second. Default directory is "My Documents".
 - 1.) Does the EASYmonitor CE finds the command-file "export.now", all actual MP85A(DP) device-settings are stored in a file "export.xml" and the command-file "export.now" gets deleted.
 - 2.) Does the EASYmonitor CE finds the file "import.xml", the device-settings from this file will be imported into the MP85A(DP) and deleted after the import and the display (GUI) of the EASYmonitor CE gets an refresh.

RELEASEnotes

3.) Are there files existing in the directory like “save_to.1” up to “save_to.31”, the actual device-settings will be stored into the corresponding Flash-parameter-set (1 ..31) of the MP85A(DP) and the command-file gets deleted afterwards.

MULTImonitor

This application is no longer available. The functions are included in the INDUSTRYmonitor !!

NEW INDUSTRYmonitor (Version: 1.2.0.2)

New:

- Improved Passcode selection (super user-mode) with double and hidden passcode-entry, optional the display of the passcode
- Speed-up of process-curve indication
- Visu: IO-curves with green background
- If MP85A devices are disconnected from the ETH-network, they are shown as gray button in the left device-list after acknowledge and can be reconnected in the worker-level (e.g. reconnection after drop-out of the power supply)
- Possibility for customizing text and information in the header of the Overview- and Detail-window. Control via ini-file (CustomizedControlTexts.ini) in the relevant language-submenu
- Data-storage: No Time-submenus when 1 day (1440 min.) is selected (only a new date-submenu after midnight 00:00)
- Backup-function to restore/load flash-parameter sets (XML-format) from/to PC
- Implementation of 3 Plug-Ins: SDO-Terminal, Workpiece-entry, Min.-Max.-value-viewer, I-P.M-Quality Data Storage
- Improvement to Microsoft Windows7 (32bit) comparability

- Implementation of functions (FW **2.22 in the MP85A is needed!!!**):
 - Statistic processing ON/OFF selection
 - Set dig. out to actual number of flash-parameter set (binary count)
 - Set.dig.out when PS loading is ready (than MP85A is ready for next process)
 - Set Heartbeat (Watchdog) to dig. out
 - Firmware-update on MP85A can be allowed/forbidden (selectable)
 - Each process can be stored with a on R-file on memory-card or PC
 - Reset/Backup of Flash parameter-sets (XML-format) to/from PC
 - Clearance of IO/NIO-signals when the process is started (selectable)
 - All 8 limit-switches can be selected for IO/NIO-evaluation Visu in: process-curve, last results, stored processes
 - FiFo-buffer on memory-card for process-curves/results 1.000/10.000 selectable

Bug-Fixes:

RELEASEnotes

- Correction of Data-storage on the last day in the month (storage was impossible)
- Visu EASYswitch: show switch-events (triangles) only when loading curves
- Menu-correction for loading XML-(Flash)-parameter sets

FASTpress Suite - CD V139

NEW PME-Assistant (Version: 3.2.R701)

Bug-Fixes:

- Backup-function: store/load Flash-parameter-sets on PC
- Read corresponding R-file correctly if only curve-file selected
- Graphics elements for Hap tic-windows

PME-Firmware Loader V1.1.4:

No news.

NEW EASYteach (Version: 1.0.4.10)

No news.

MP85A-Toolkit V.1.0 R5.4:

New: Smaller updated on graphical elements

EASYmonitor CE V.1.1 R0.0:

No news.

MULTImonitor V.1.0R3.3:

No news.

NEW INDUSTRYmonitor (Version: 1.1.0.6)

New:

- Shut-down INDUSTRYmonitor with out Microsoft-Windows comments

RELEASEnotes

- Optimized graphics for fast curve-visualization
- Create new sub-directory for R/CD-files when time 00:00 is exceeded
- If option „-“, is selected no time-sub-folder is created
- Curce-visu: now without any curve-history selectable
- Curve-Archive: curve-listing now with Date&Time of the curves

Bug-Fixes:

- Function „Reference Zero-Value“ corrected
- IM running stabile, when after loading R-/C-/D-files

FASTpress Suite - CD V138

NEW PME-Assistant (Version: 3.2.R601)

Bug-Fixes:

- correct texts in the table of results for the tolerance-windows
- Update of the Online-help and pdf-manuals

PME-Firmware Loader V1.1.4:

No news.

NEW EASYteach (Version: 1.0.4.10)

New:

- Implementation of the EASYteach function if the process-curves are in the quadrants Q2,Q3,Q4 of the X/Y-diagram

Bug-Fixes:

- correction of the visualization of tolerance-windows, when more process-curves are loaded after tolerance-windows are created
- correction of the visualization of the average-curve
- correction of entry/exit-visualization (arrows) of the tolerance-windows
- correction of smaller text-writing errors

MP85A-Toolkit V.1.0 R5.3:

No news.

RELEASEnotes

EASYmonitor CE V.1.1 R0.0:

No news.

MULTImonitor V.1.0R3.3:

No news.

NEW INDUSTRYmonitor (Version: 1.1.0.2)

New:

- Implementation of the full EASYswitch functionality
- Extension of the adjustment-possibilities for tolerance-windows
- SDO-terminal
- Plug-In's (2 pre-defined, more possible via the customer)
- Update of the Online-Help
- Update of the pdf-manuals (available on HBMdoc and on the System-CD)

Bug-Fixes:

- corrected graphics for process-curves and position of relative axis and windows
- corrected text for results of the measurement

FASTpress Suite - CD V137

PME-Assistant V3.2.501:

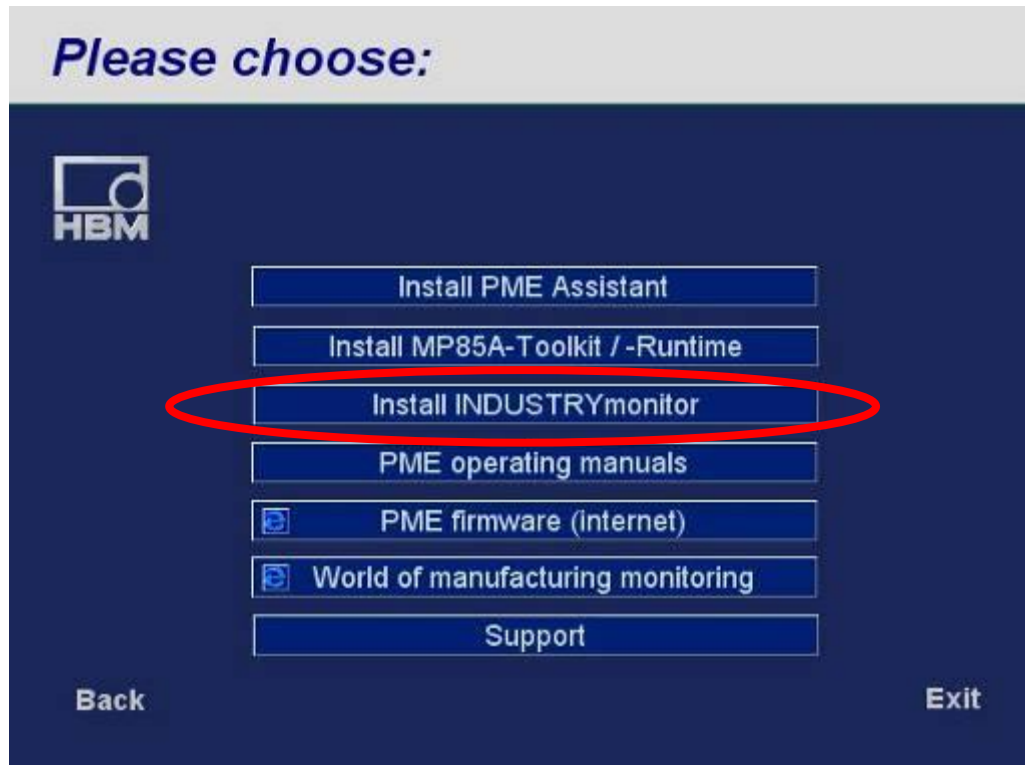
New: Assistant is now also running on PC/Laptop with Windows Multi-Language-Operating-System from Microsoft.

BugFix: Assistant is checking the MP85A.. firmware and hides option which are not Supported by the firmware. (an info-message pops up for user info, if he has to use a newer, actual version of the PME-Assistant).



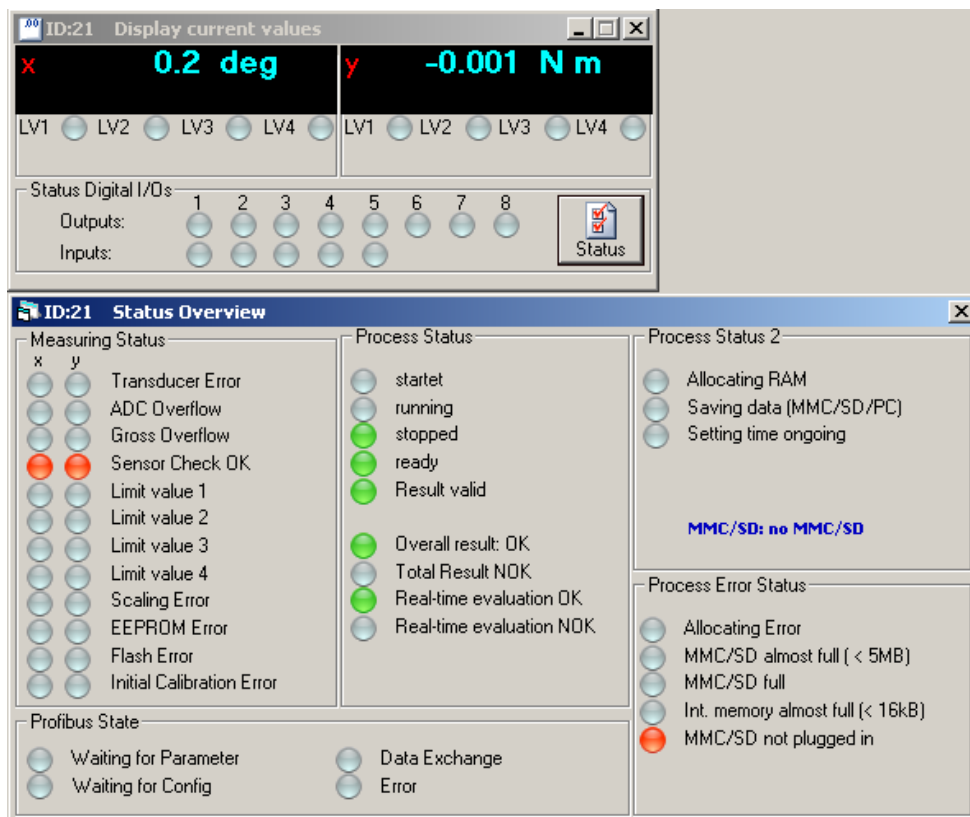
New: Installation routine extended for Toolkit examples and the new INDUSTRYmonitor.

RELEASEnotes

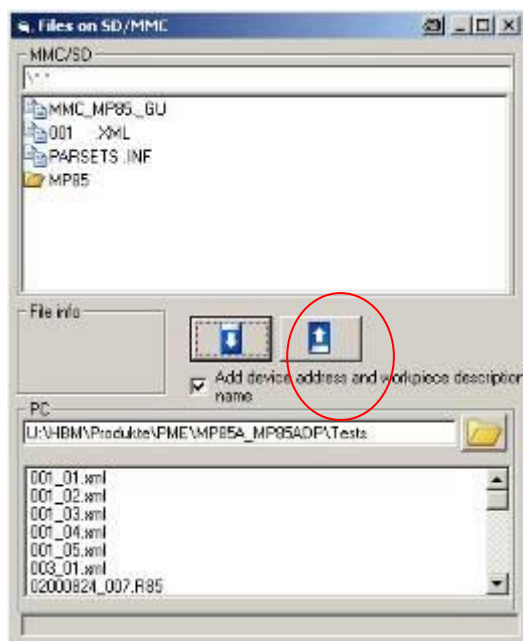


New: Expansion of the indication of the MP85A device-status.

RELEASEnotes

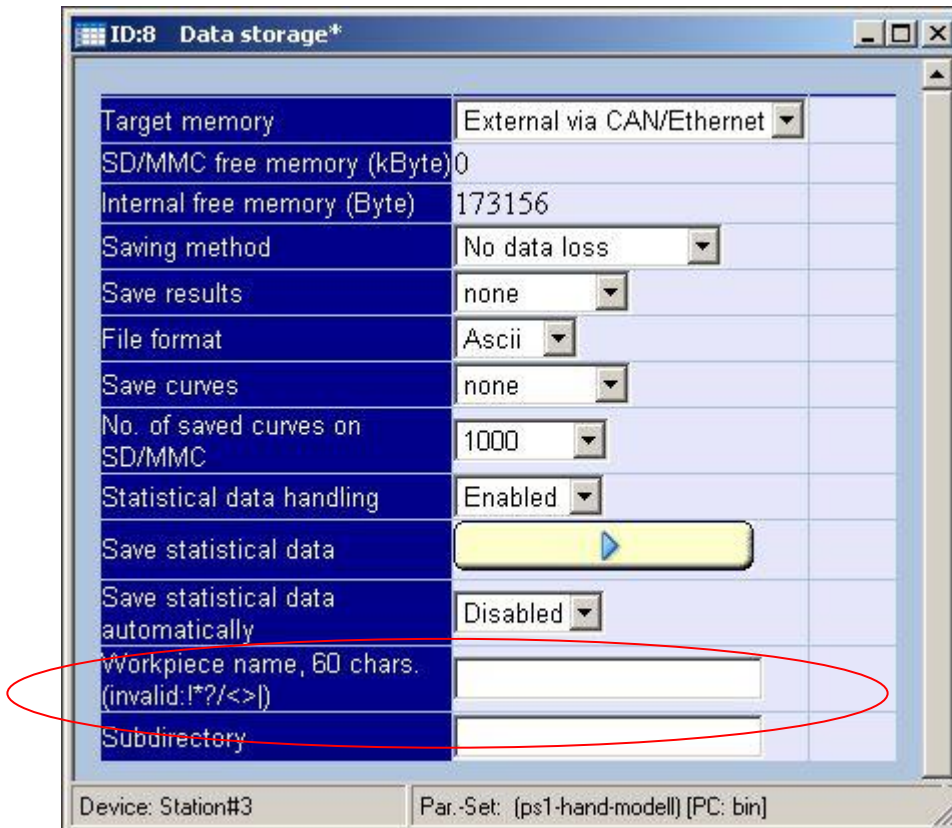


New: - Now beside MMC also SD-memory cards (up to 2GB) can be used in the MP85A... File-transfer now also from PC to MMC/SD card. (FW.2.18 necessary) (NO SD-**HC** format applicable !!!)



- Filtering of unacceptable strings: ^!"\$\$%&/(){}~+*-.,:; for String parameters like channel name, workpiece-ID,.. etc. (FW.2.18 necessary)

RELEASEnotes

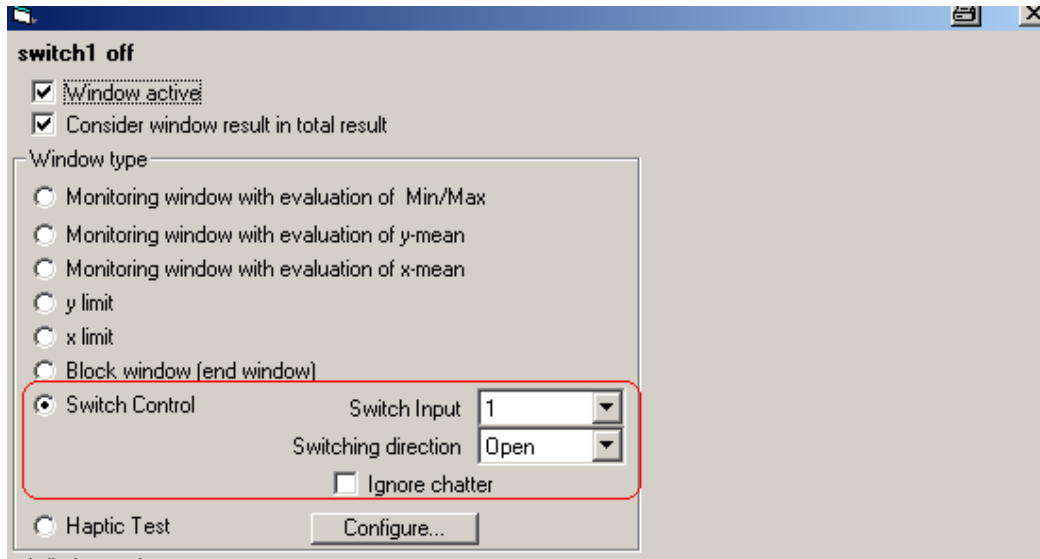


- PME-Assistant can be automatically started with a pre-selection of Menus:
 - Set-of-menus has to be stored as a collection via the PME-Assistant.
 - Add the directory and the name of the menu-collection-file to the properties in the windows start function.
- Update of the PDF- documentation and INDUSTRYmonitor is included in the Quick-start manual of the FASTpressSuite).

RELEASEnotes

EASYswitch (MP85A(DP)-S :

New: Multiple switch-events in a switch-evaluation window can be ignored and evaluated as OK-event. (FW.2.18 necessary)



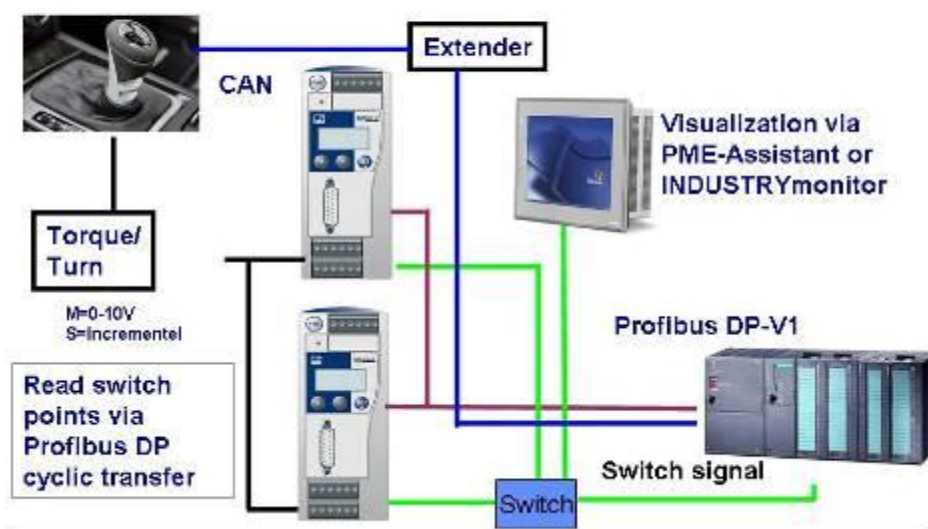
- Switch-events can be sent via Profibus to the MP85ADP-S. (FW.2.18 necessary)
So, beside the real switch input, there are 4 additional (virtual) switch-inputs.

Example:

MP85A EASYswitch



Switch- & Haptic tests for gear sticks

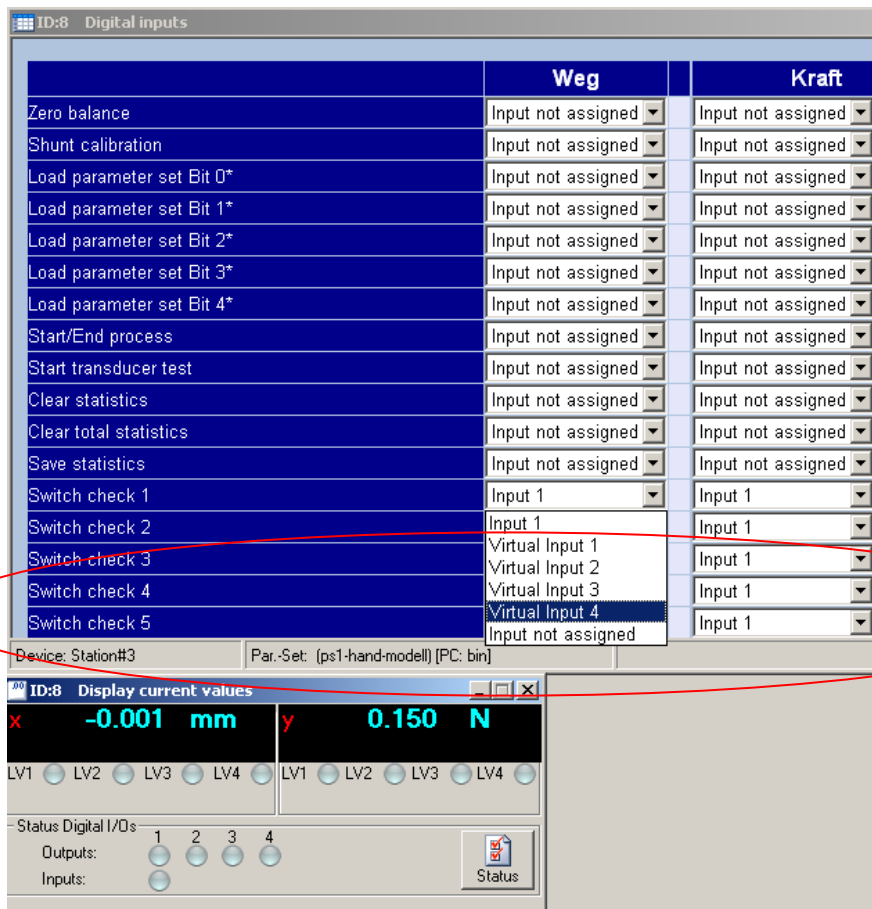


18.02.2008, Page 24

Hiltner Badmitten Messtechnik GmbH

Michael Guckes

RELEASEnotes



PME-Firmware Loader V1.1.4:

No news.

EASYtech V1.0.4.7:

BugFix: Correction for the Reference-point calculation for curves in Q2..Q4.

MP85A-Toolkit V.1.0R5.1:

New: Implementation of COM-Interface COM; useable e.g. under VB6 (Visual Basic).
(See Toolkit Online-Help if Toolkit is installed.)

EASYmonitor CE V.1.1 R0.0:

Update: Graphic-elements for buttons replaced, so that EASYmonitor CE runs on CE-terminals from Siemens (Siemens had changed the Windows operating system).

RELEASEnotes

MULTImonitor V.1.0 R3.3:

New: RESTRICTED-MODE - the MULTImonitor can be started with the option, that the user can't close the application. With this User/worker can not stop data-storage on a target PC in production.

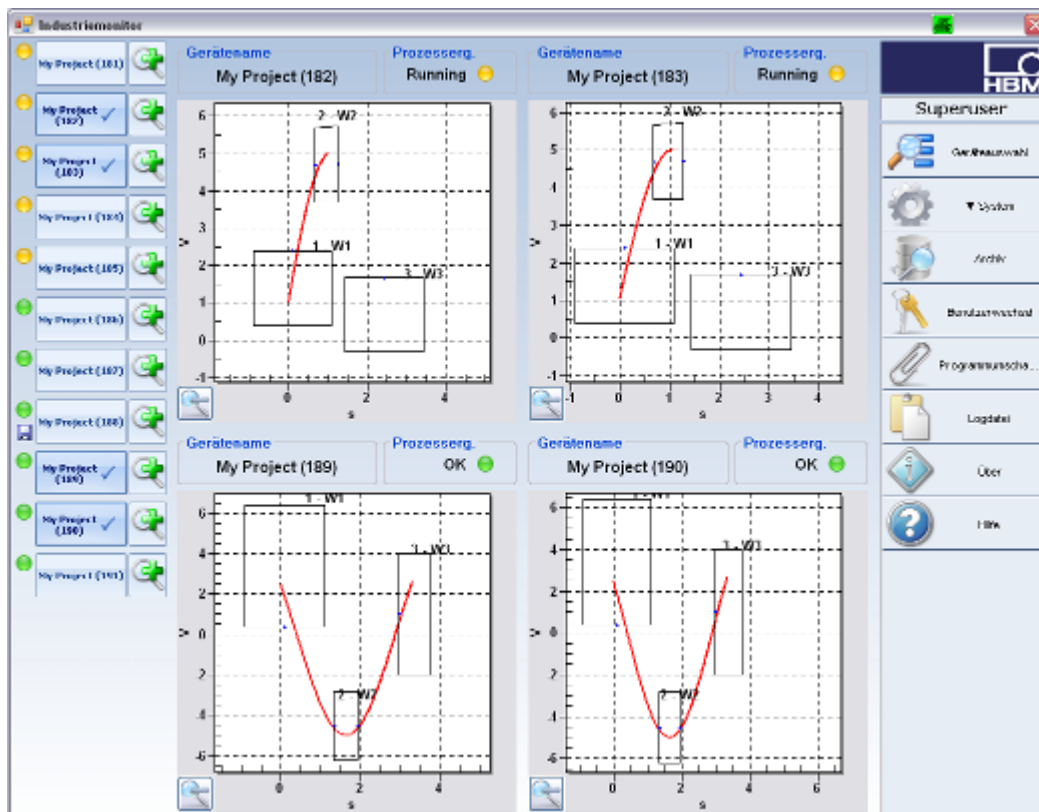
INDUSTRYmonitor V.1.0R0.3:

New: First Release of the Production-Software INDUSTRYmonitor for Windows2000 / XP / Vista. Operating System running on IPC-Computers.

Optimized for touch-operation with max. 12 MP85A(DP)(-S) devices.

MMC/SD card necessary: Parameter sets only to be stored and used from MMC/SD cards in this first version !

The INDUSTRYmonitor can be installed in a demo-mode to be started 25 times. After started 25 times the Software will not connect to any MP85A.. device (only visualization of saved processes is possible). To get unlimited access, the INDUSTRYmonitor can be registered with a MP85A-Runtime license during the installation (see also price list).



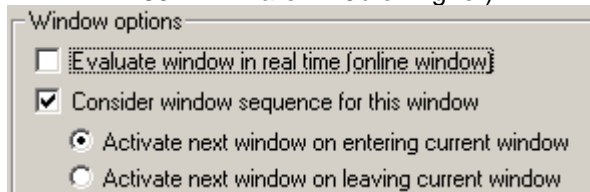
Each page of the INDUSTRYmonitor has a Help-Button with dedicated Help informations to the functions of the page

RELEASEnotes

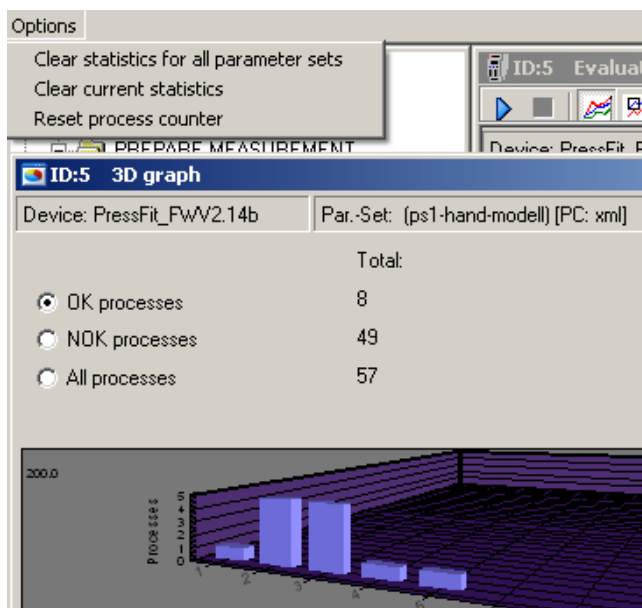
FASTpress Suite - CD V136

PME-Assistant V3.2.401:

New: Option for Tolerance-windows: active - after process has left the former window (needs MP85A firmware 2.15b or higher).



New: IO / NIO –Counter can be reseted with “clear statistics” (needs MP85A firmware 2.15b or higher).



New: Retrieve saved data / curve now also from toleranceband and envelope curves (needs MP85A firmware 2.15b or higher).

RELEASE notes

The screenshot shows the 'Retrieve saved data' window. It includes a process counter (00005), process data files, and a graph titled 'Evaluation Mode: Envelope curve'. Below the graph is a table with columns for 'Result', 'Min(y)', 'Max(y)', 'Min(x)', 'Max(x)', and 'Mean/Sw'. A 'Select file' dialog is open, showing a list of files with columns for 'File', 'Date', 'Size (Byte)', 'Status', 'Par. set', 'Process', and 'Subdirectory'.

File	Date	Size (Byte)	Status	Par. set	Process	Subdirectory
Hüllkurve.test_01000005_010.D85	2008-05-29 15:...	2273	NOK	1	5	
Hüllkurve.test_01000006_010.C85	2008-05-29 15:...	2414	OK	1	6	
Hüllkurve.test_01000007_010.C85	2008-05-30 07:...	2242	OK	1	7	
Hüllkurve.test_01000008_010.D85	2008-05-30 07:...	797	NOK	1	8	
Tolband-test_15000005_005.D85	2008-06-13 13:...	925	NOK	15	5	

New: Expansion of the indication of the MP85A device-status.

The screenshot shows two windows: 'Display current values' and 'Status Overview'. The 'Display current values' window shows x=0.000 mm and y=0.685 N. The 'Status Overview' window shows various status indicators for measuring, process, and process status 2, along with error status details.

- Update of the Online-help files for the MP85A and the PME-modules.
- Update of the PDF- documentation.

RELEASEnotes

PME-Firmware Loader V1.1.4:

No news.

EASYtech V1.0.4.5:

No news.

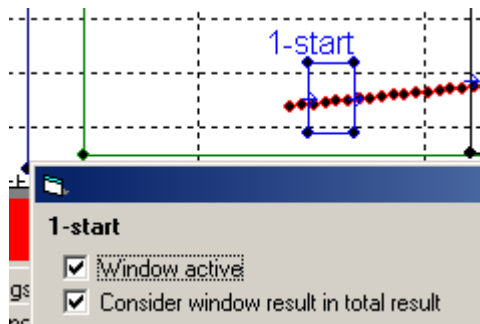
MP85A-Toolkit V.1.0 R3.2:

No news.

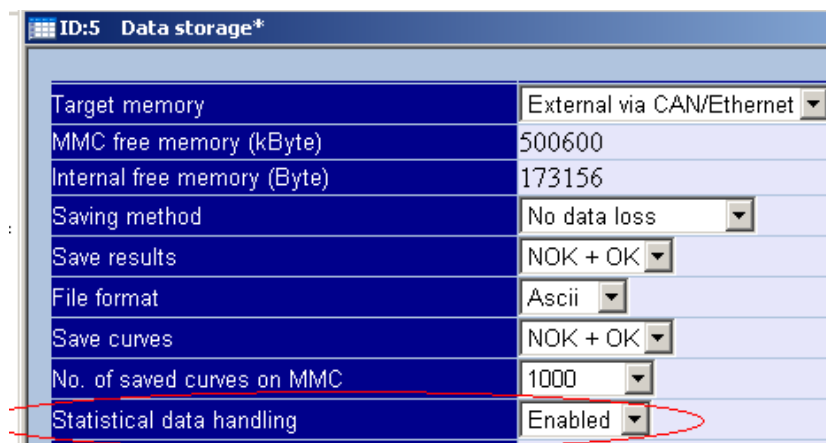
FASTpress Suite - CD V135

PME-Assistant V3.2.301:

New: Tolerance-windows can be selected for integration in the total-result (IO / NIO).
These windows then may be used for tool-fault detection, which are not relevant for the Process-result (needs MP85A firmware 2.15b or higher).



New: Process-Statistics can be switched ON / OFF for causes of service and set-up the system (needs MP85A firmware 2.15b or higher).



RELEASEnotes

New: Digital output for reset of a connected piezoelectric amplifier (e.g. CMA, Kistler,..).
(needs MP85A firmware 2.15b or higher and hardware 1.07 or higher).



PME-Firmware Loader V1.1.4:

No news.

EASYtech V1.0.4.5:

New: When creating an Envelope-curve, the beginning and end of the envelope curve gets a shift of 5% in x direction.

BugFix: additional imported process curves now get adjusted correctly to the reference point.

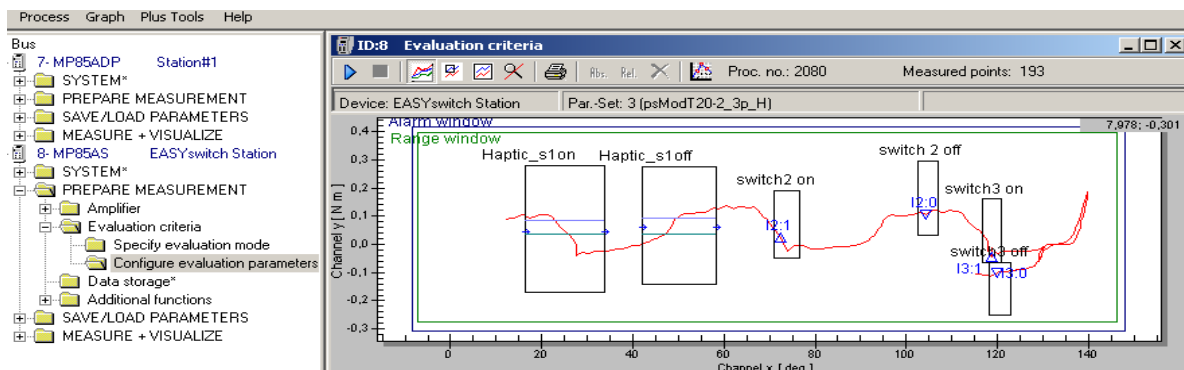
MP85A-Toolkit V.1.0 R3.2:

No news.

FASTpress Suite - CD V134

PME-Assistant V3.2.201:

New: Implementation of the Haptic-Functionality for the MP85A(DP)-S :



- New menu for setting up the Haptic-Windows:

RELEASE notes

Haptic test

Evaluation criteria

	Min	Max
<input checked="" type="checkbox"/> Actuation Force (Fa)	0,083	0,280
<input checked="" type="checkbox"/> Reverse Force (Fr)	-0,170	0,035
<input checked="" type="checkbox"/> Difference Force (Fa - Fr)	0,076	0,450
<input checked="" type="checkbox"/> Difference Displacement (Sr - Sa)	2,0	17,0
<input checked="" type="checkbox"/> Force-Displacement Ratio ((Fa - Fr) / (Sr - Sa))	0,0 /	0,1 /
<input checked="" type="checkbox"/> Click Ratio ((Fa - Fr) / Fa) * 100	0 %	200 %

OK

- Expansion of the table for Last results/stored results:

ID:8 Results of last measurement

Device: EASYswitch Station Par.-Set: 3 (psModT20-2_3p_H)

Overall status last process: 2080 Cause for end: --- Settling time expired
 Process counter: 2080 Cause for alarm: ---
 Parameter set number: 3 Overall result: **OK** auto refresh

	Result	Min(Channel y) x y	Max(Channel y) x y	Min(Channel x) x y	Max(Channel x) x y	Mea
Range window		118,4 -0,113	139,7 0,186	12,2 0,091	139,7 0,186	
switch2 on (Switch)	OK	- -	- -	- -	- -	72
switch 2 off (Switch)	OK	- -	- -	- -	- -	104
switch3 on (Switch)	OK	- -	- -	- -	- -	118
switch3 off (Switch)	OK	- -	- -	- -	- -	119
Haptic_s1on (Haptic)	OK	27,7 -0,042	21,5 0,105	17,2 0,095	33 -0,023	
Haptic_s1off (Haptic)	OK	42,5 0,003	57,7 0,129	42,5 0,003	57,7 0,129	
Haptic Window	Haptic Result	Actuation Force Fa	Reverse Force Fr	Difference Force Fa-Fr	Difference Displacement Sr-Sa	Force-D
Haptic_s1on (Switch)	Haptic OK	0,105	-0,042	0,147	6,2	
Haptic_s1off (Switch)	Haptic OK	0	0,003	0,126	-15,2	

- Indication of the source of the loaded parameter-set in the headline of the graphical windows (evaluation criteria / measurement curve / firmware 2.14 or higher necessary).

- Mask: stored results/curves optimized for protocol print-outs:

ID:7 Retrieve saved data

Process counter: 00757 Process Data File: 01000756_004.R85 Device Name: My Project
 Curve Files: 01000757_004.D85

Process
 Date of creation: 04.12.2007/16:32:50!
 Workpiece ID:
 Parameter set: 1 (ps1-hand-modell)

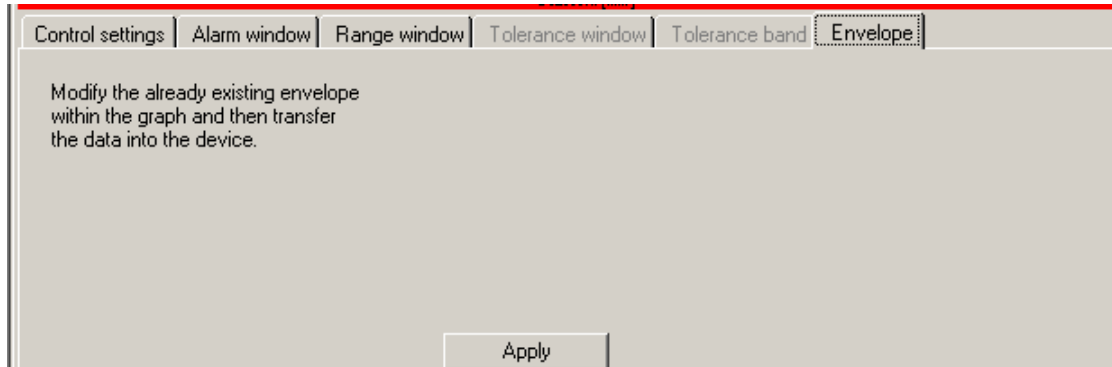
Total Result
 Cause for end: X reverse motion
 Cause for alarm: ---

Total result
NIO

	Result	Min(y) x y	Max(y) x y	Min(x) x y	Max(x) x y
Range window		2,169000 5,222000	17,292999 92,825996	2,169000 5,222000	17,292999 92,825996
1-start	OK	2,674000 6,345000	3,446000 7,926000	- -	- -
2-border	OK	- -	- -	- -	- -
3-rel y mittel F (rel.)	OK	8,287000 3,699000	10,065000 6,961000	- -	- -
4-rel x (rel.)	OK	2,799000 24,947001	5,368000 29,820000	- -	- -
5-block (rel.)	Error Max. y	7,684000 33,717999	7,738000 79,176003	- -	- -

RELEASEnotes

- New TAB for Envelope-curve with readjusting of existing envelope-curve:



PME-Firmware Loader V1.1.4:

No news.

EASYtech V1.0.4.2:

New: Storage and reload of all settings, evaluation criteria and adjustments in a project.

MP85A-Toolkit V.1.0 R3.2:

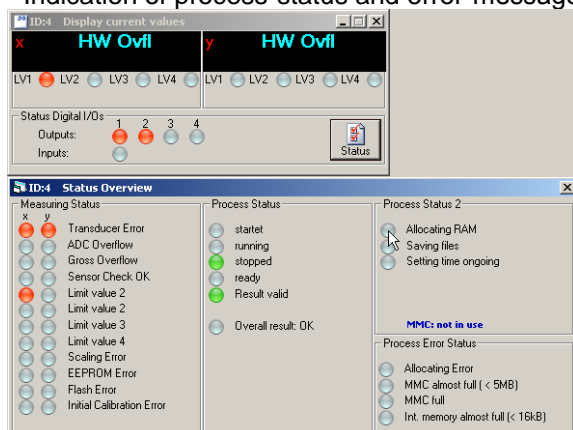
No news.

FASTpress Suite - CD V133

PME-Assistant V3.2.101:

New:

- Indication of process-status and error-messages in a new window "status-overview".



RELEASEnotes

- Retrieve saved data: clicking on a curve-file brings now curve plus results and windows in the graphic.
- Better Data Storage mechanism: checking if no files with 0kB size are produced.
- Scaling on the range-window in the graphical curve-windows.
- Tolerance-band can be modified also after it's shifted into the MP85A.
- Option in the file "Options.ini": PROGRAMCONTROL -> NEW_FILE_ON_WP_CHANGE=1/0 controls if a new R-file will be created during the change of the workpiece-id.
- New icons for "start" and "stop" by hand.
- Detailed indication of information (type/target) of the used parameter-sets.
- During a measurement-process no changes of tolerance-windows / band conditions are available.
- Information-window if no data-storage of (curves/results) in the target PC is possible.
- Retrieve saved data: Integration of a logo into this window (also available during the print out later on).
- Implementation of indication and adjustments the EASYswitch functions. These functions get only displayed, when an EASYswitch device is connected!
- Update of the Offline-versions for FASTpress and EASYswitch devices.
- Update of the Help-files.
- New and helpful section for FAQ's.

New (firmware 2.12 or higher necessary):

- Storage of 999 parameter-set on the additional MMC-card in binary format.
- Implementation of the condition for the end of a process-measurement.
(now selectable from an external signal or several internal conditions.

BugFix: Selection of the storage directory now ok.

BugFix (firmware 2.12 or higher necessary):

- Date correction of the curve- and result-files during copying from MMC to PC (the date of creation is fix now).

PME-Firmware Loader V1.1.4:

BugFix:

- Renaming of the loader Software to PmeUpd.exe, because of Windows-Vista requirements.
- Correct indication and storage of the selected directory in the application, using the software in a network.

PME-Firmware-Loader is part of the PME-Assistant, and will be installed automatically during the PME-Assistant installation.

EASYtech V1.0.3.2:

- Start of the EASYtech application now also separately possible.
- EASYtech icon now on the desktop during installation.
- Coordinates of the cursor (channel x / y) now as figures permanently available.
- New adjustments: curves can be activated / deactivated for the calculation and switched to visible/unvisible (but still under calculation).
- Update of the Help-files.

RELEASEnotes

Please order the FASTpress Suite-CD to get the latest Software and Applications.

MP85A-Toolkit V.1.0 R3.2:

New:

- Application: MULTImonitor.exe (Up to 32 MP85A(DP connected to the application) now also available in german language. Application running under Microsoft Windows2000 / XP / Vista.
- Implementation of the EASYswitch (MP85A-S / MP85ADP-S) functions.
- More detailed and better Help-description.

FASTpress Suite - CD V132

PME-Assistant V3.1.401:

New:

- Indication of the Message-window for "missing communication" to be activated / deactivated by mouse-click.

BugFix:

- Time-Out for "checking of a missing communication" expands up app. 10 sec.
- Filename gets the correct name with the Workpiece-ID, which fits to the actual process.

PME-Firmware Loader V1.1.0:

BugFix:

Correct indication and storage of the selected directory in the application, when the

EASYtech V1.0.2.0:

No changes

MP85A-Toolkit V.1.0 R3:

New:

New Application: **MULTImonitor.exe** (Up to 32 MP85A(DP) can be connected to the application. Max 4 station can be displayed on the Screen). Application running under Microsoft Windows2000 / XP / Vista

New Application: **EASYmonitor CE**. An Installation witch transmits the Application to a Terminal which runs under Microsoft WindowsCE 5 or higher.

Both applications can be started 25 times (demo modus). Afterwards a Runtime-license is necessary.

RELEASEnotes

FASTpress Suite - CD V131

PME-Assistant V3.1.301:

New:

- Automatic Registration and indication of Interface-timeouts (loosing connection and getting connection back)
- Expanding the change. log file for registration of changing's, done via PME-Assistant
- Visual Background informations in the PME Assistant (picture / animation /webpage)
- Curve history in the measuring mode up 100 curves maximum
- Message in a connection to an already connected device should be opened
- Retrieve saved data/curves: selecting curves by mouse-click open curves in addition the results, windows, etc.

EASYtech V1.0.2.0:

New:

- Better handling of the functions and graphics

BugFix:

- Re-Import of the tolerance-windows from EASYtech to MP85A(DP9 now with correct coordinates and relative y-point

MP85A-Toolkit V.1.0 R2:

New:

- New graphical objects with correct licenses implemented
- Update of the help files
- Update of EASYmonitor application example

RELEASEnotes

Please always use the latest firmware and software version, available on HBM.com's download section: → Support → Software / Firmware Downloads → Industrial amplifier

-- end of file

RELEASEnotes

HBM GmbH

www.hbm.com

Email: info@hbm.com

Tel. +49 6151 803-0

Fax +49 6151 803-9100

measure and predict with confidence

