

## TECH NOTE :: Using the QuantumX Data Recorder CX22B-W as Gateway

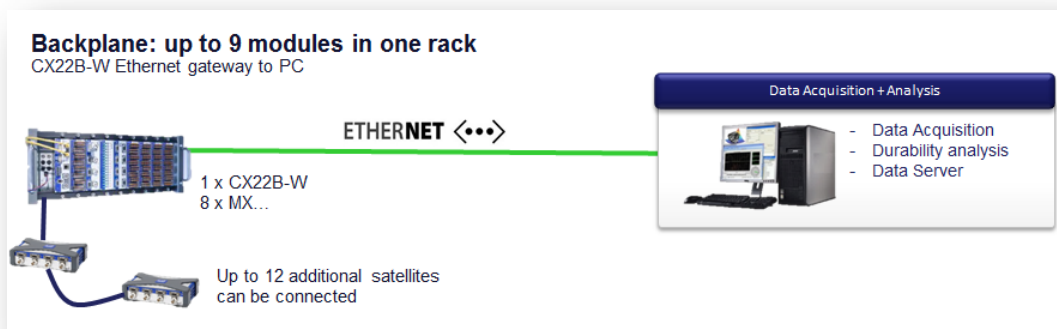
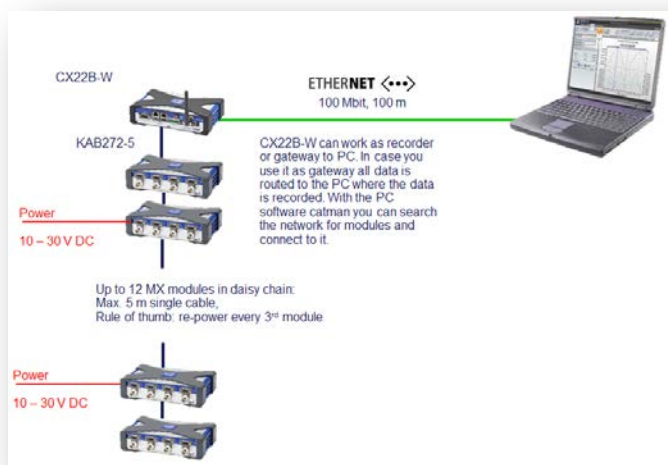
Version: 2016-12-01

Author: Christof Salcher, Product Manager Test & Measurement, HBM Germany

Status: public

### Description

This Tech Note describes how to prepare the QuantumX Data Recorder as a gateway so that you can route all incoming data from modules to a PC via the CX22B-W and Gigabit Ethernet. The following graphics show the system used in a distributed and in a centralized configuration (integrated into a backplane).

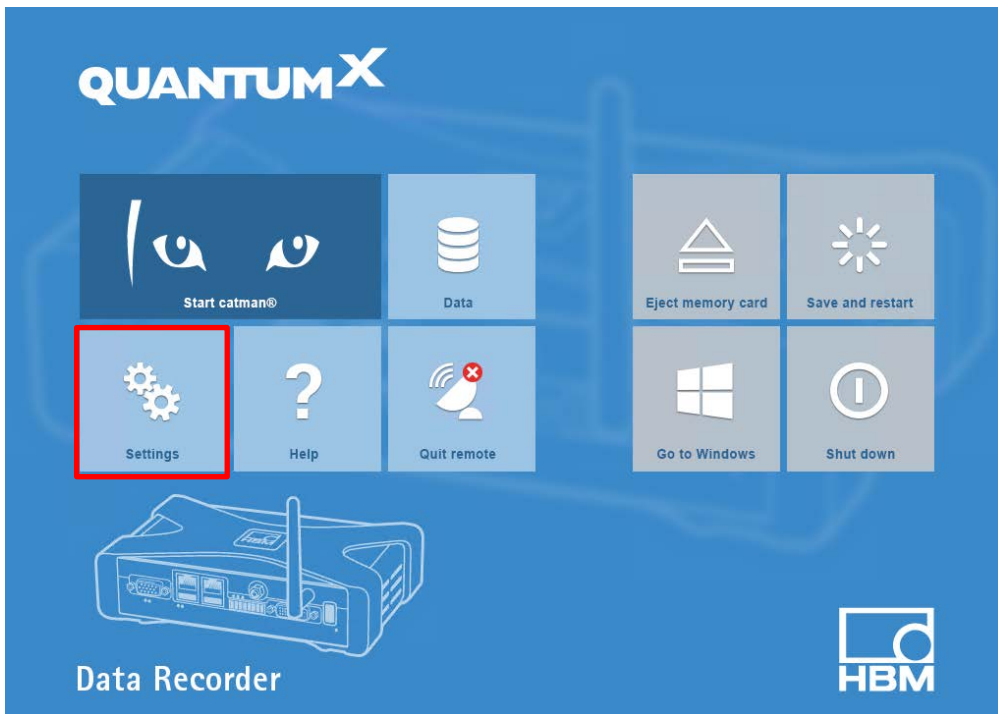


### How to Configure the Gateway Functionality of the Data Recorder

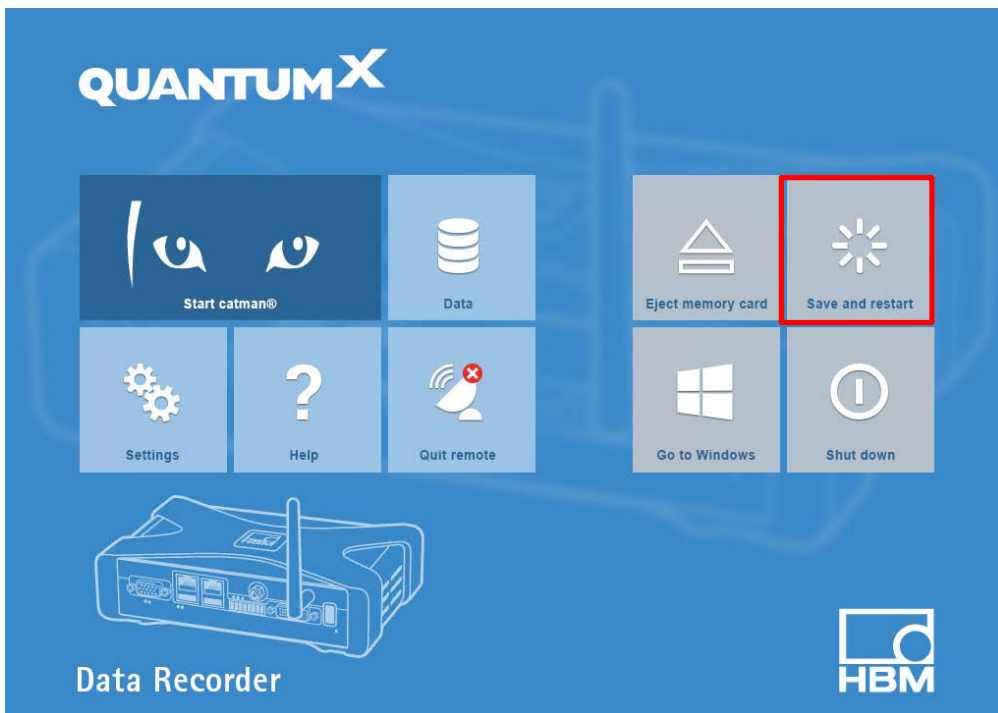
The gateway functionality is integrated in CX22B / CX22B-W software version 4.2.2. It will be officially released with software version 5 which is planned to be released in Q1-2017.

Here is the step-by-step workflow showing how to activate and test this functionality.

Connect to the CX22B-W and click on **“Settings”**.



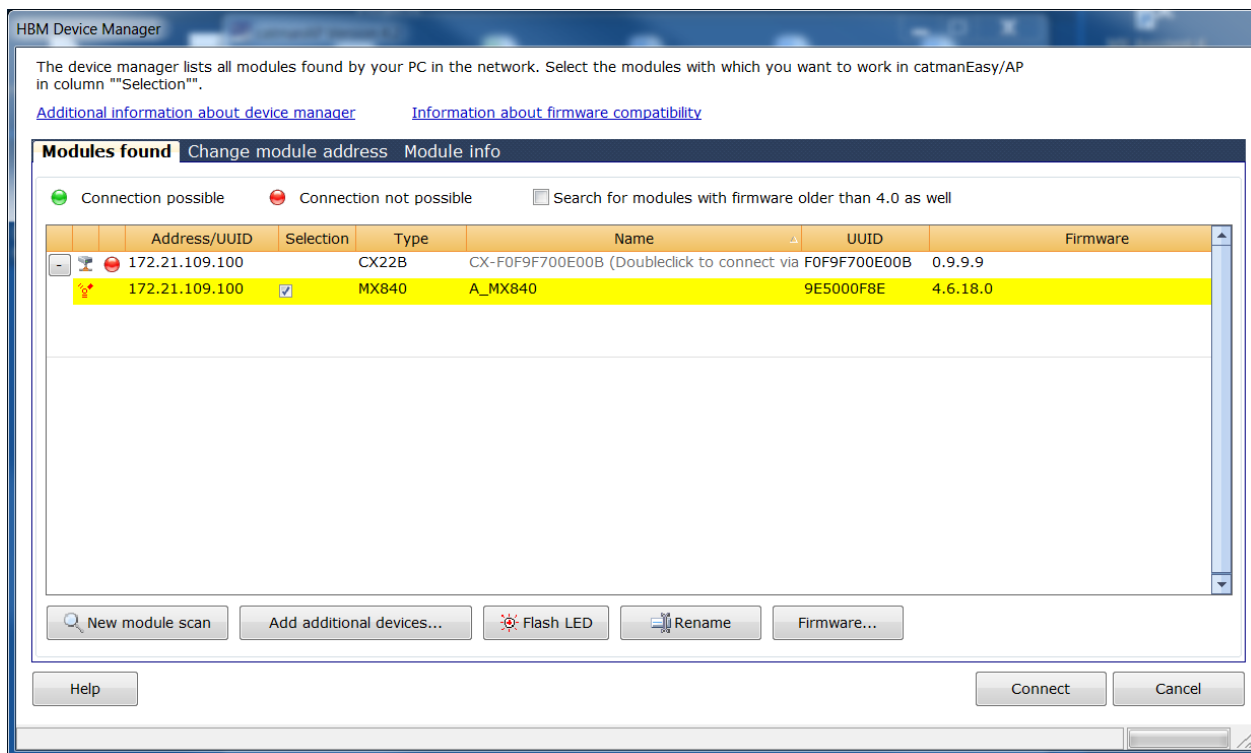
Activate the gateway function. Then go back to the shell and click on **“Save and restart”** making this change permanently available.



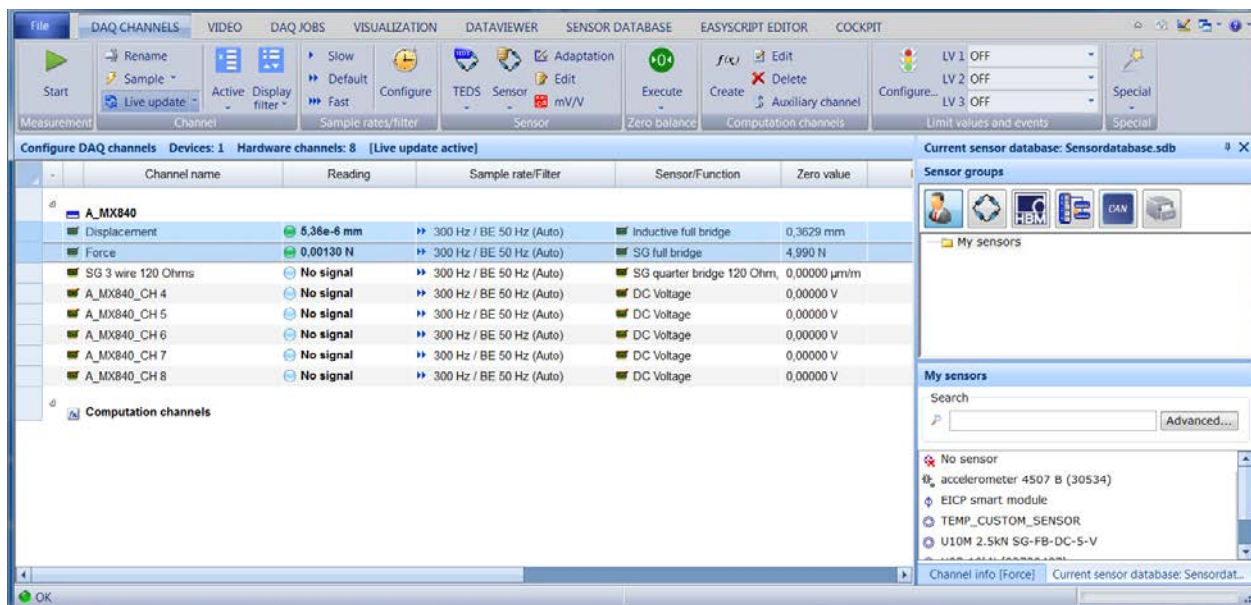
Some seconds later you can start catman on your PC, scan the network for modules and connect to the modules you want to work with.



Now start **catman on your PC**. You can now find and connect to all modules “behind” the CX22B-W, parameterize all channels and acquire data.



catman running on your PC visualizes and acquires the data.



**WARNING**

Activated gateway functionality can interfere with local recording.

-- end

**Legal Disclaimer:** TECH NOTEs are designed to provide a quick overview. TECH NOTEs are continuously improved and so change frequently. HBM assumes no liability for the correctness and/or completeness of the descriptions. We reserve the right to make changes to the features and/or the descriptions at any time without prior notice.