

TECH NOTE #004:: GOM Aramis integration in catman

Version: 2020-06-24

Status: public

Abstract

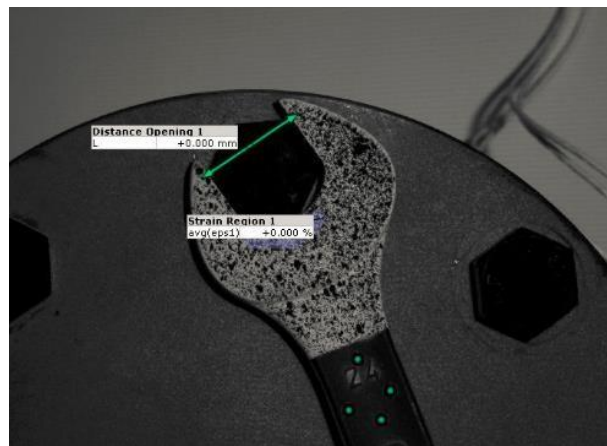
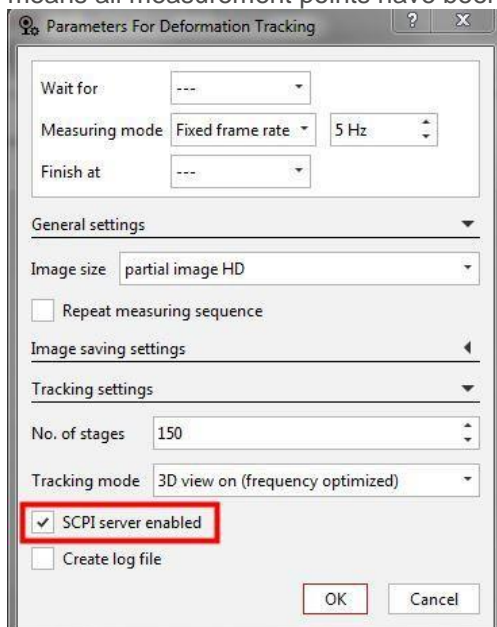
This Tech Note describes how to integrate the GOM Aramis system into a catman measurement.

Prerequisites

- catman AP Version \geq V5.2; The support is included in catman AP only, not in catman Easy
- Aramis Version \geq Aramis Professional 2017
- Before starting in catman the Aramis system must be fully configured and a measurement is running. When starting with catman no further configuration changes in Aramis are allowed, e.g. add or delete measurement points.
- The SCPI interface must be enabled for communication with catman

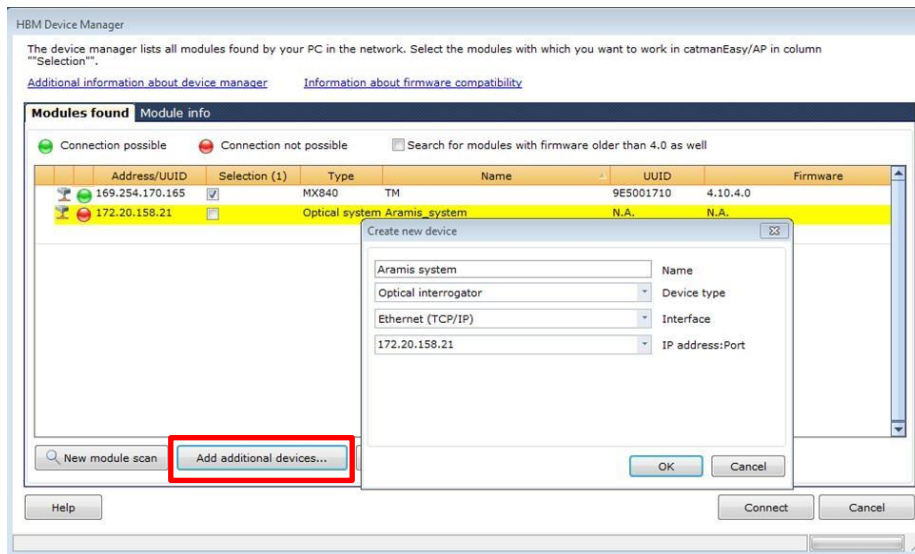
Workflow

1. Before you start with catman make sure that the Aramis system is fully configured and running. This means all measurement points have been defined and SCPI interface is enabled.



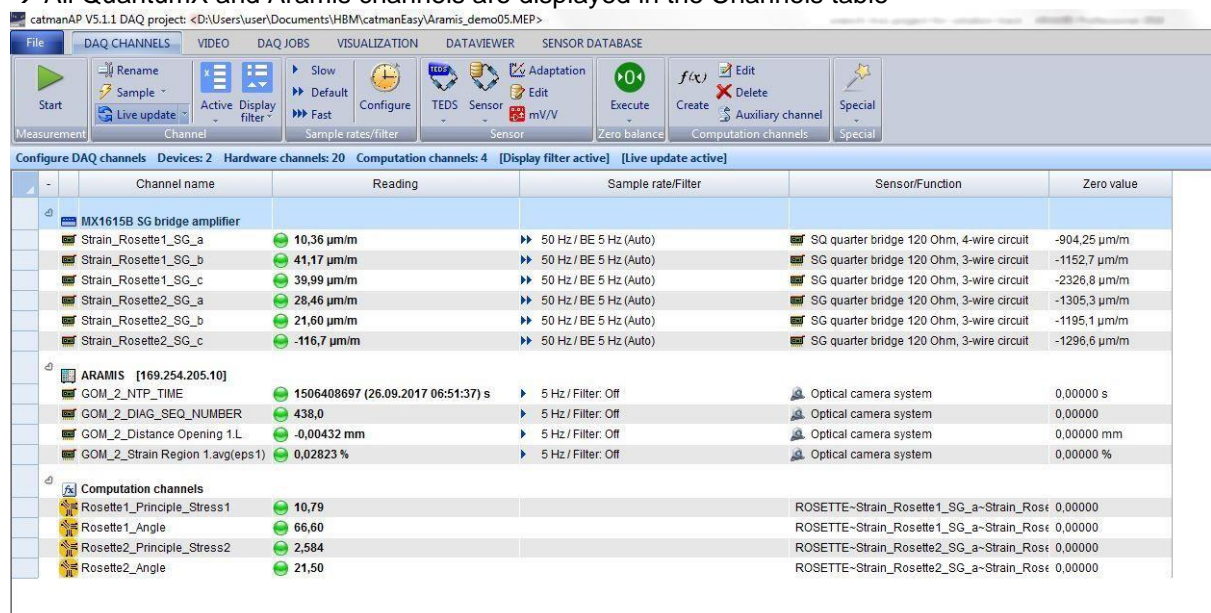
2. Start catman and create a new measurement project

- In the HBM device manager dialog click on “Add additional devices” and select optical interrogator in the “Create new device” dialog. Enter also the device name which should be displayed for the Aramis system in the catman DAQ channel list and enter the IP address of the device.



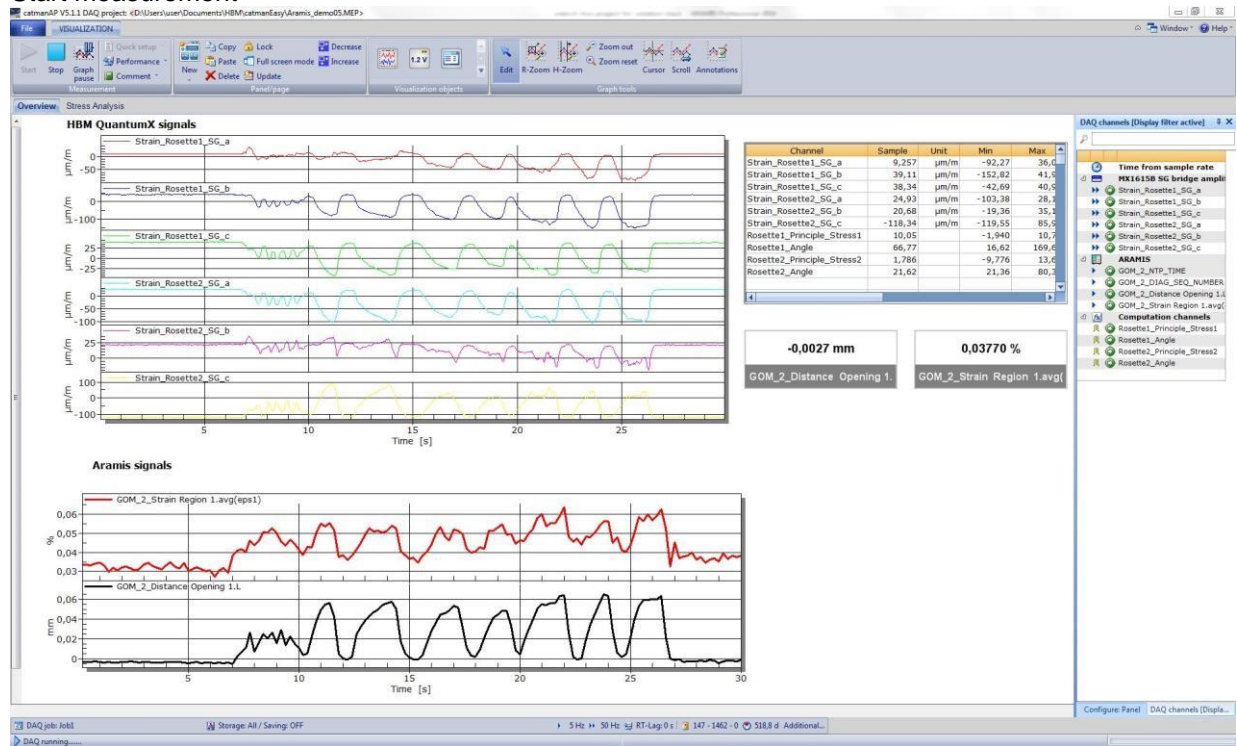
→ After click on OK catman adds the device to the available devices and tries to establish a connection. If connection was successful a green bullet is displayed next to the device, if not a red bullet is displayed. In case the connection was not successful please check if network cables are correct connected, IP address is correct and SCPI interface is enabled.

- Now select QuantumX modules and Aramis HW in HBM device manager and click on “Connect” → All QuantumX and Aramis channels are displayed in the Channels table



- Configure the same sample rate for Aramis like configured in the Aramis software
- Configure QuantumX system and DAQ job

7. Start measurement



Synchronization between QuantumX and Aramis

To synchronize both systems NTP can be used. To do so you have to enable NTP in QuantumX and Aramis and configure the same NTP master.

For the Aramis system the NTP service is running on the testing controller hardware, which must be connected to the same network as the QuantumX.

GOM Testing Controller Web Interface

-- end

Legal Disclaimer: TECH NOTES from HBK are designed to provide a quick overview to a specific topic beside the usual documentation. TECH NOTES are continuously improved and so change frequently. HBM assumes no liability for the completeness of the descriptions. We reserve the right to make changes to the features and/or the descriptions at any time without prior notice.