

TECH NOTE #095:: catman and Microsoft Power BI - Data Visualization in the Web in Just a Few Steps

Version: 2021-06-09

Document: TN095

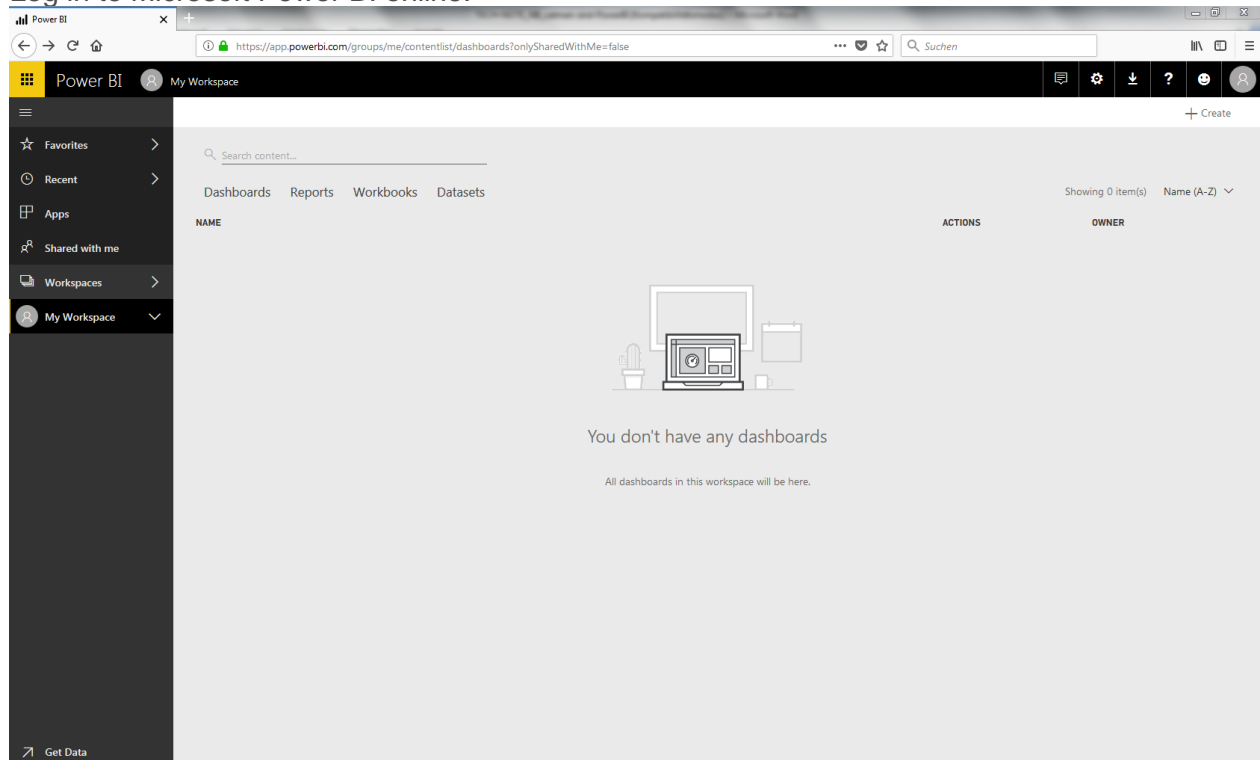
Status: public

Abstract

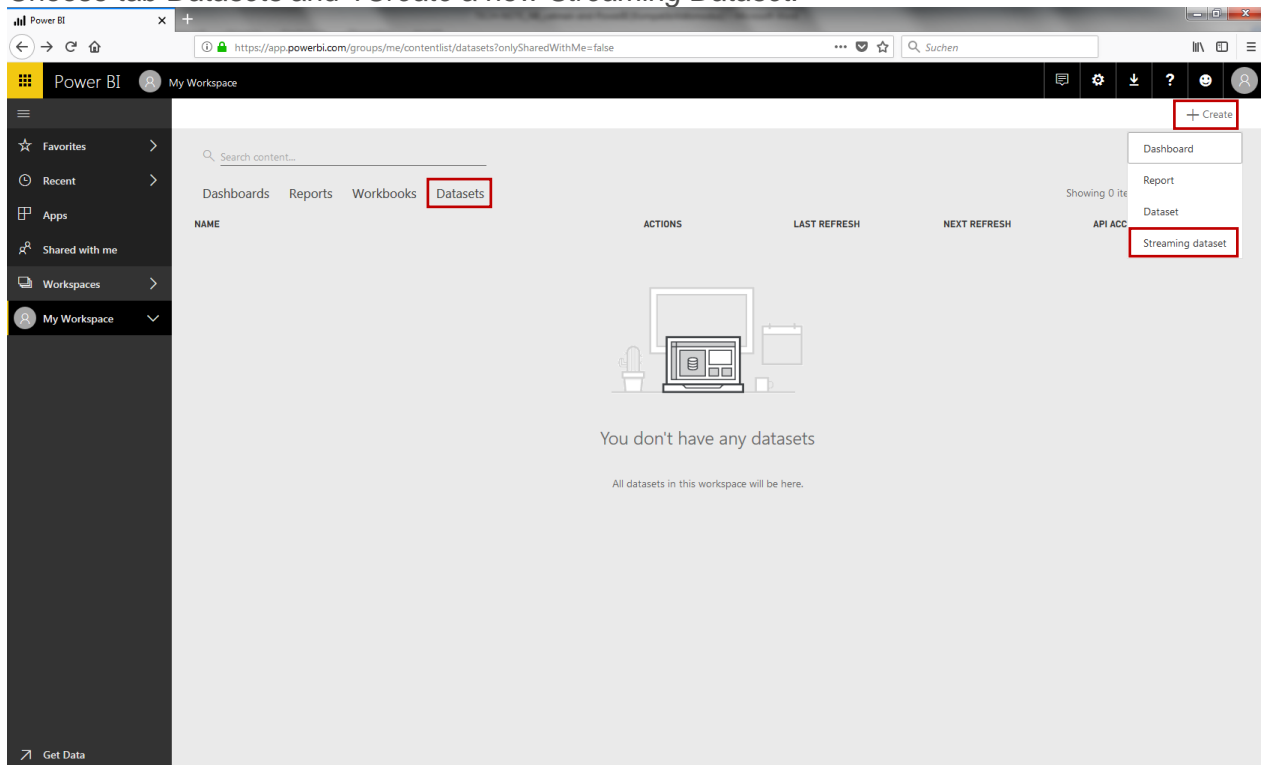
This Tech Note describes how catman live data can be streamed with Microsoft Power BI. It takes just a few steps to transfer data to Power BI, stream selected channels online and share with however you wish to share it with.

Getting Started with Power BI

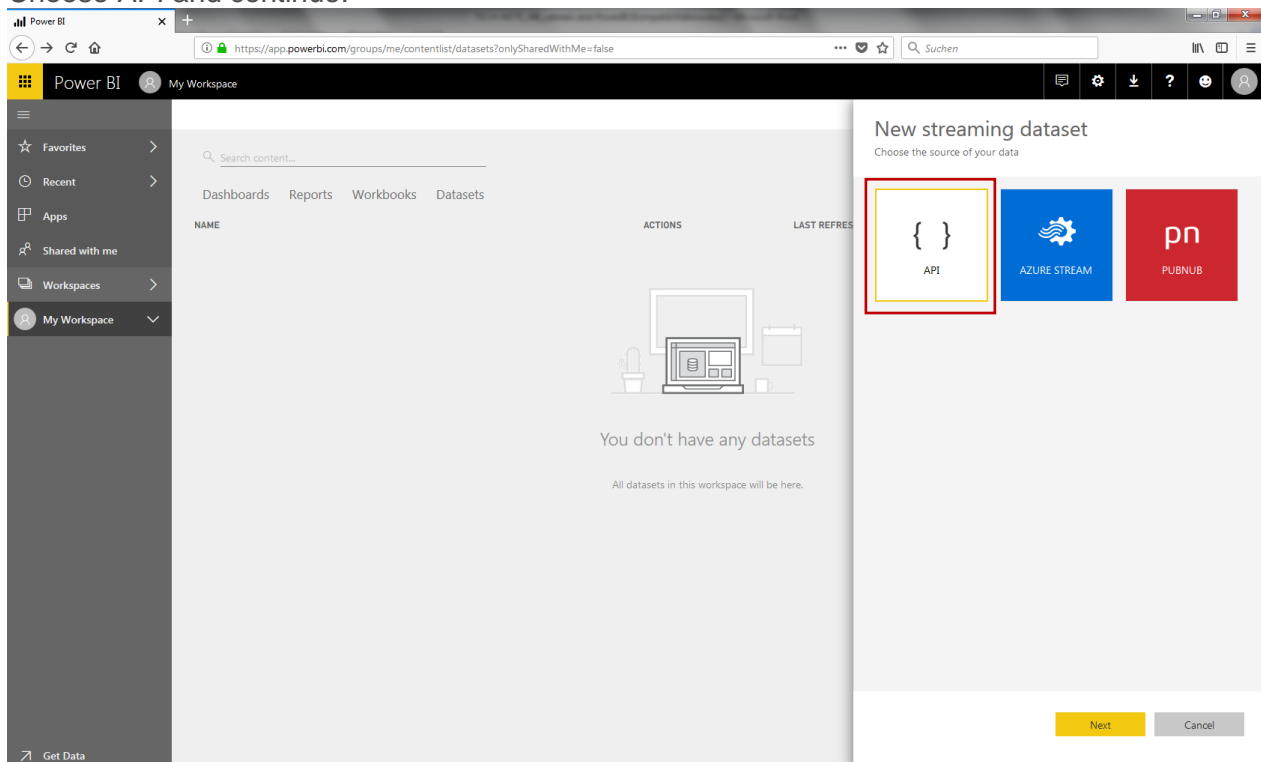
Log in to Microsoft Power BI online.



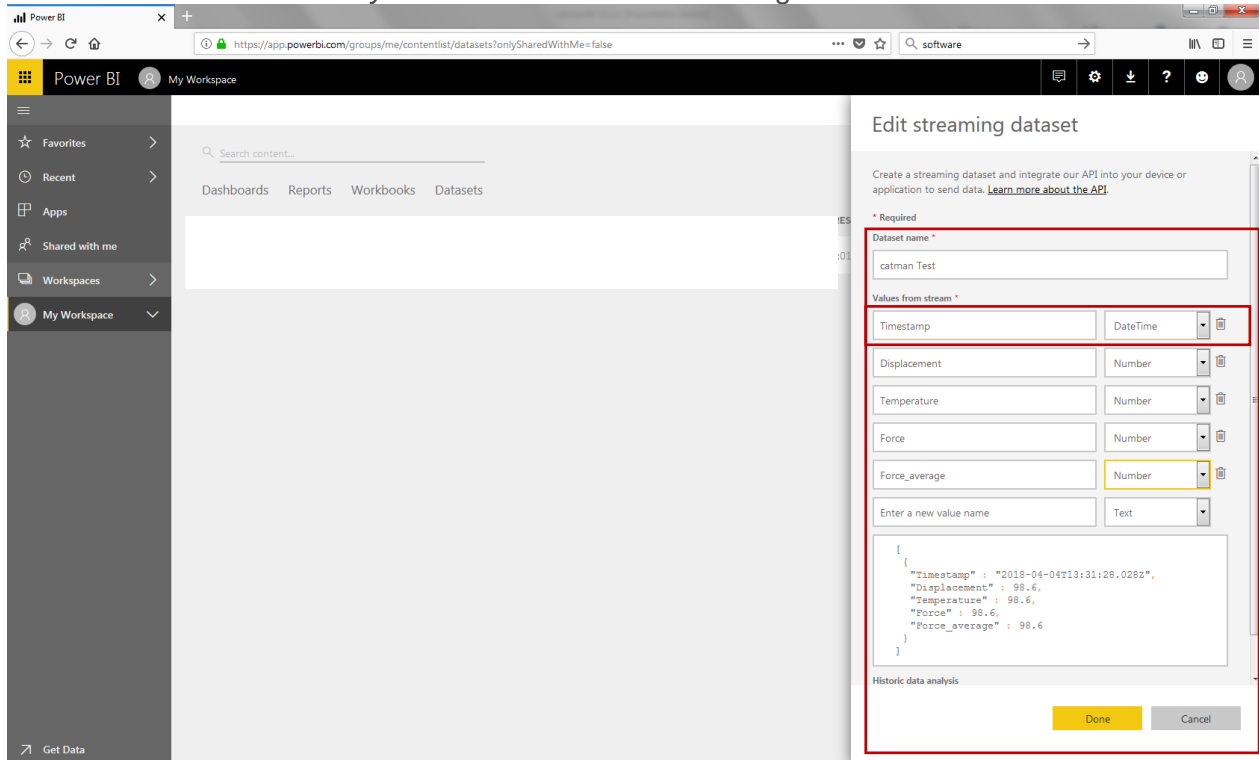
Choose tab *Datasets* and *+Create a new Streaming Dataset*.



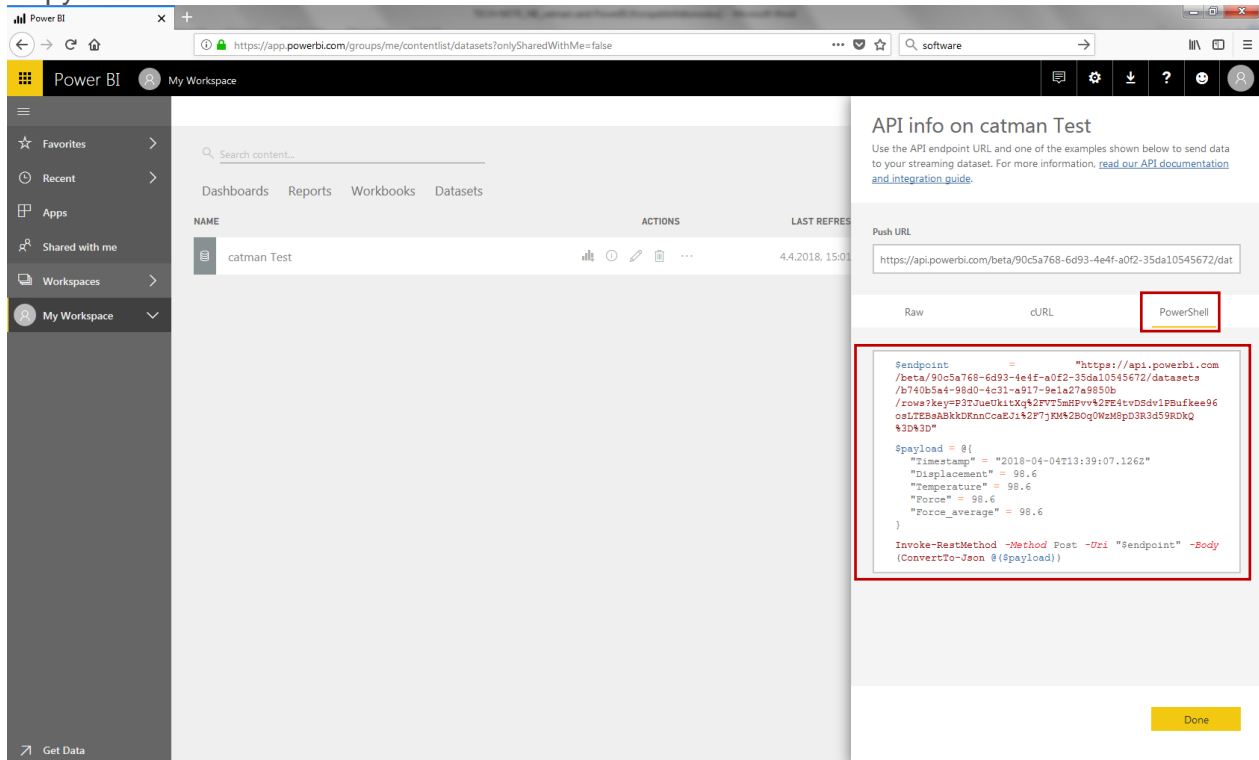
Choose *API* and continue.

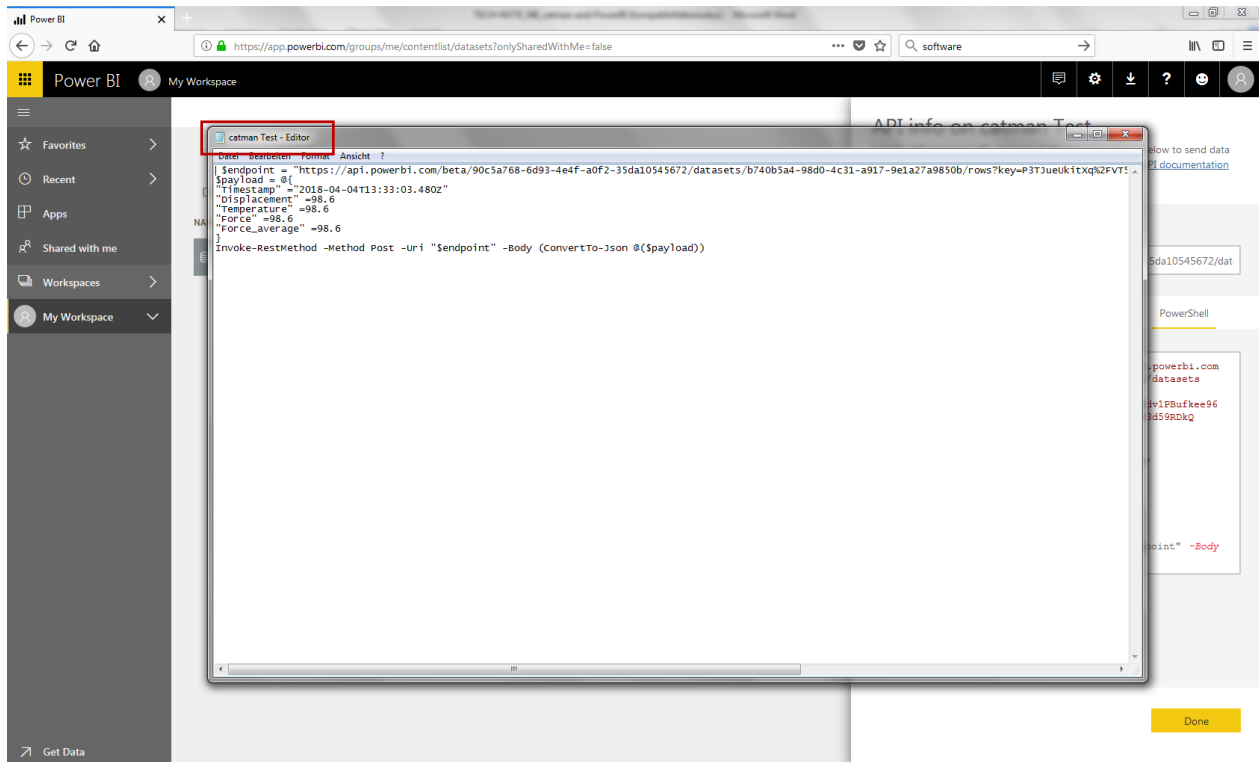


Type in a *Dataset name* and define *values* you wish to transfer to Power BI. Choose value types.
Note: It is important to choose *Timestamp* as first value.
 Switch on *Historic data analysis* and create a new streaming dataset.



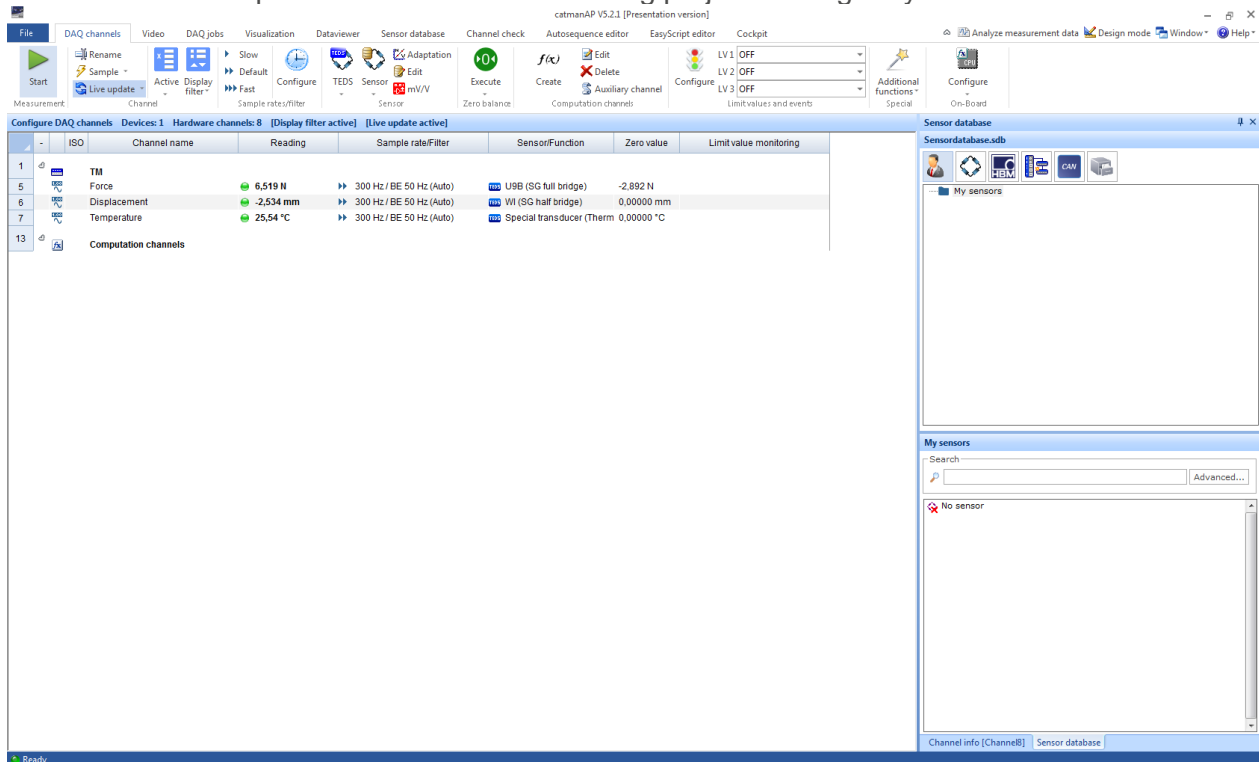
Copy the created *PowerShell* information into a .txt file.



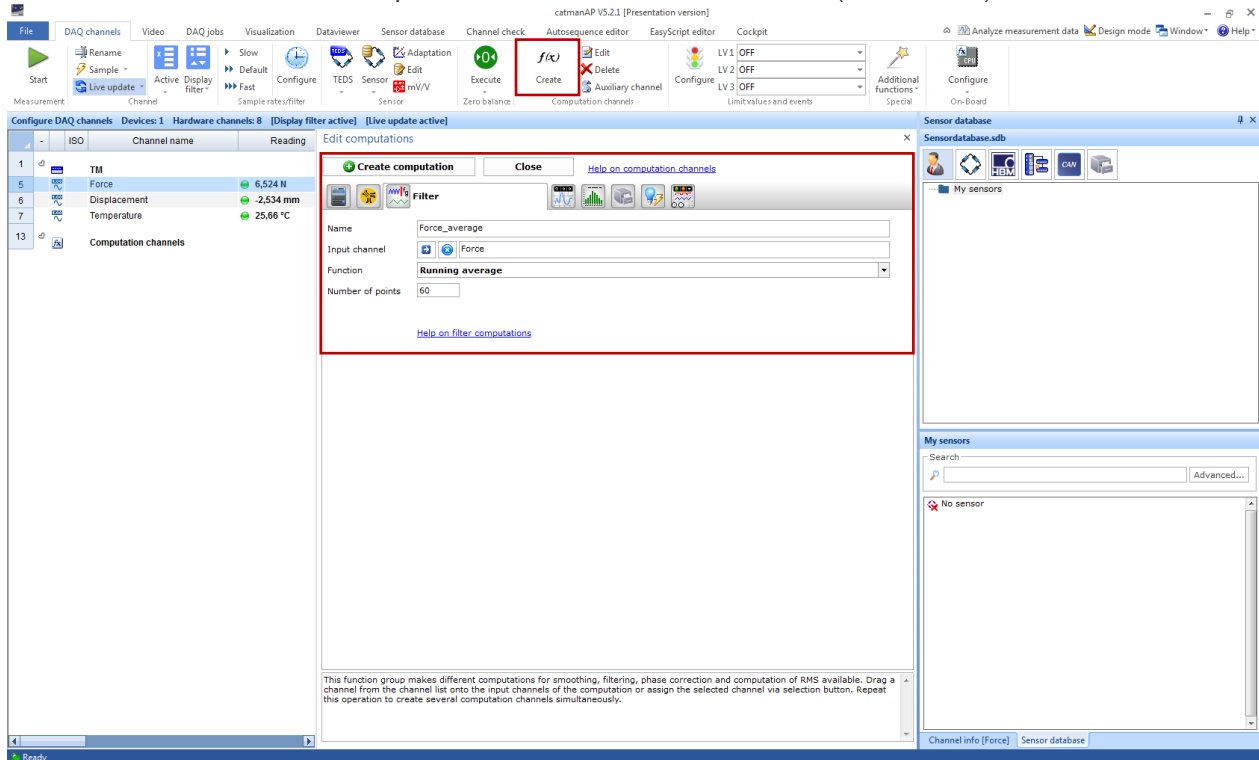


Setting up the catman project

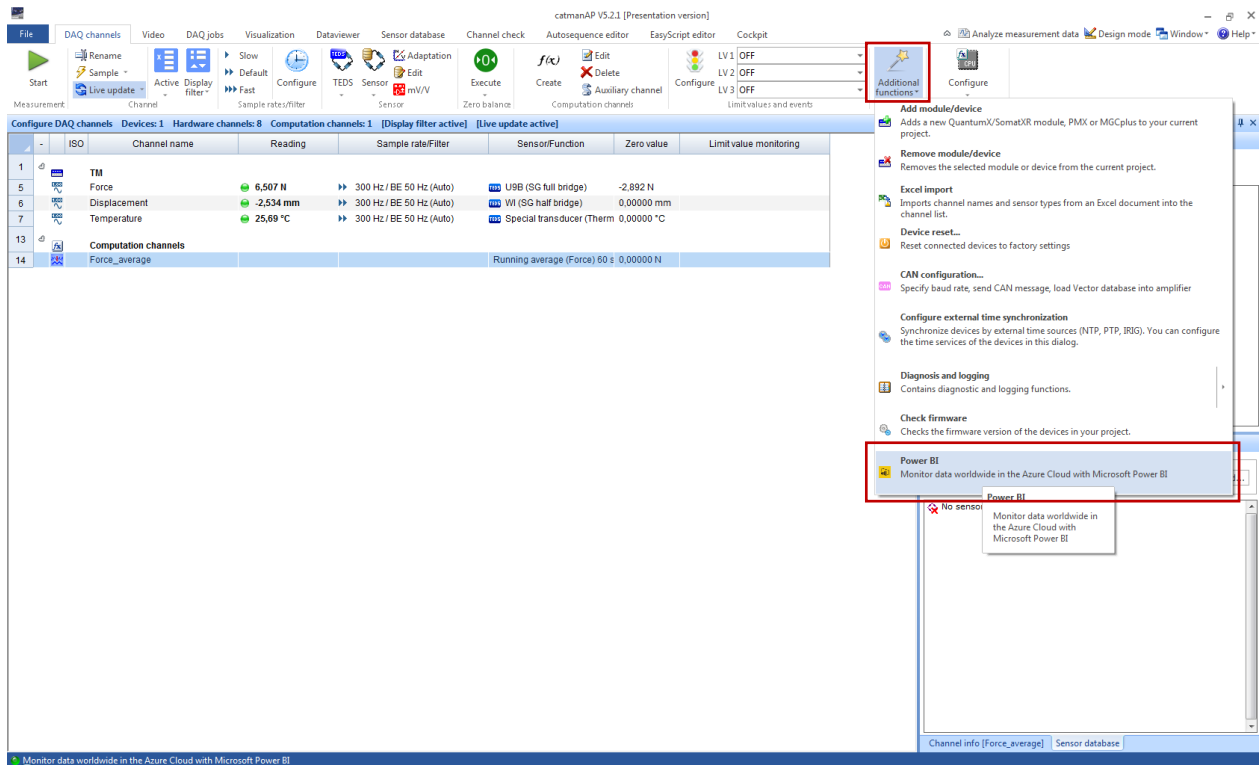
Start catman and open either a new or an existing project. Configure your connected sensors.



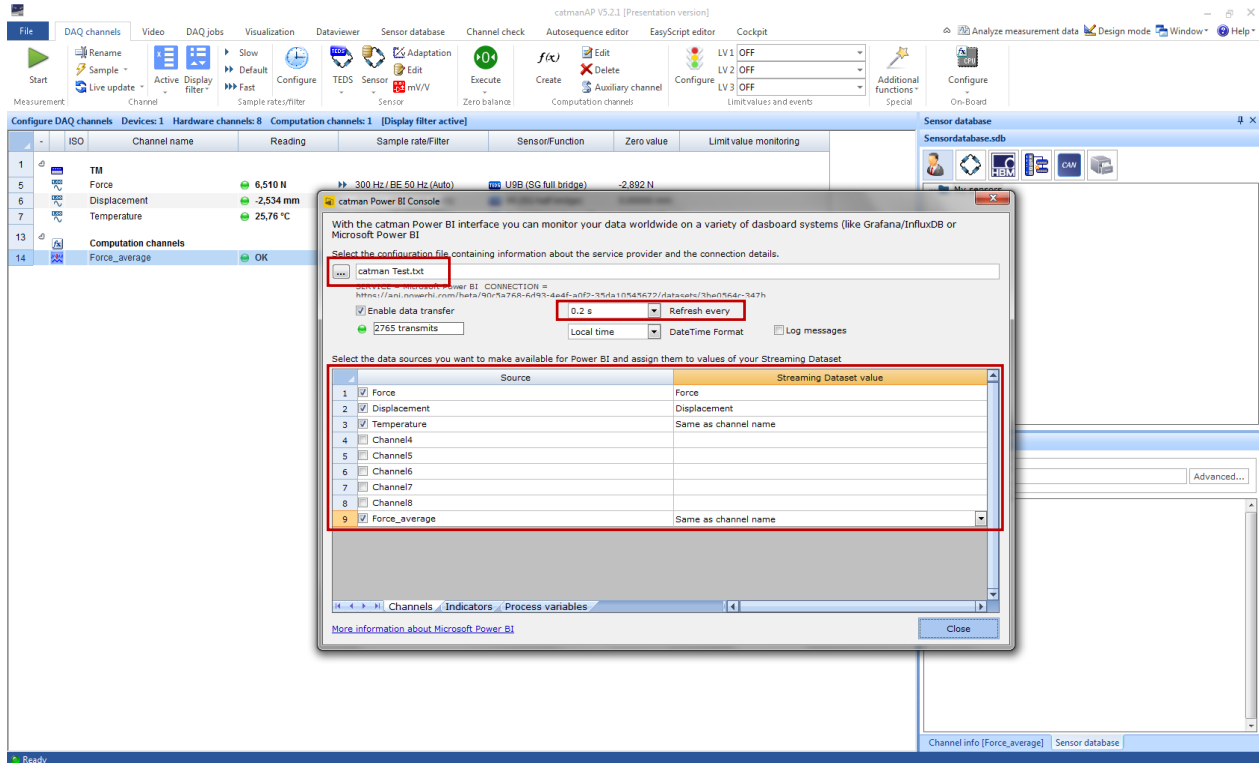
Optionally you can create a computational channel (-> *Filter*) to build a *Running average*. This might be useful due to different sample rates in catman and Power BI (max. 5 S/s).



Go to *Additional functions* and choose *Power BI*.

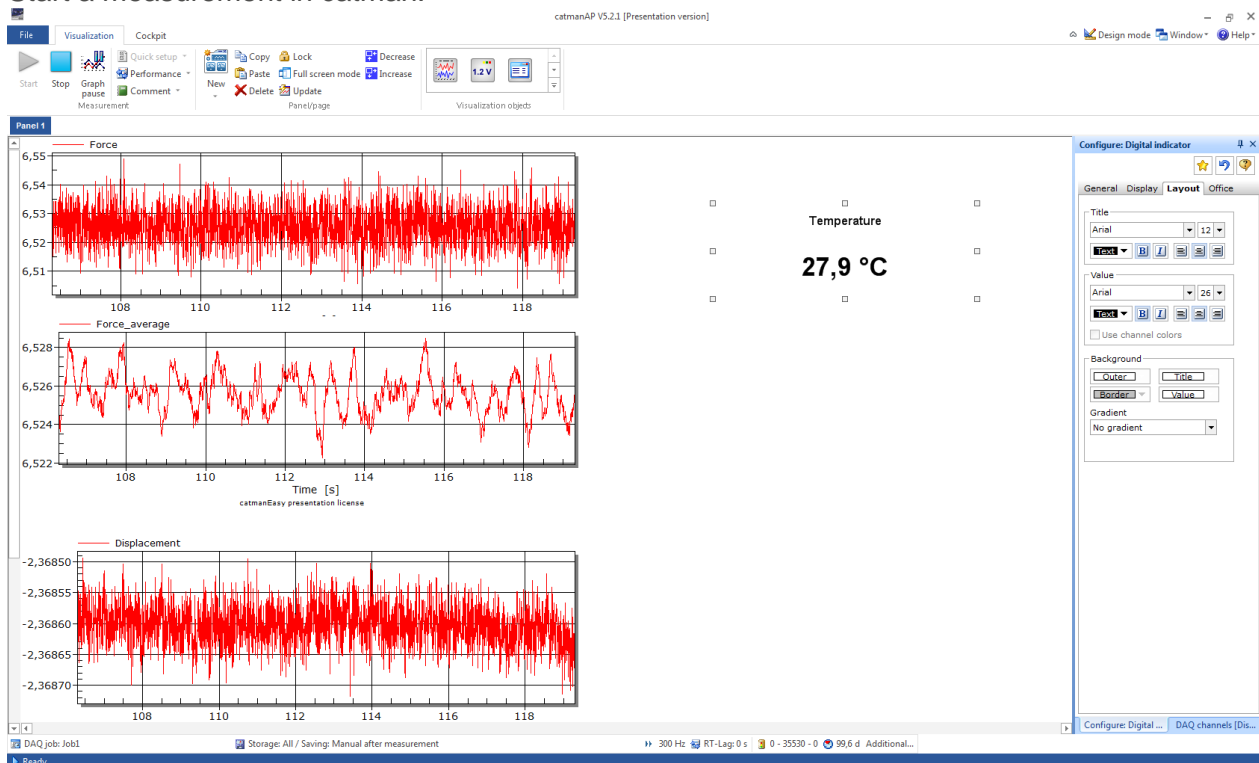


Import .txt file into catman and define sample rate (5 S/s max.). *Enable data transfer* and align the channels.

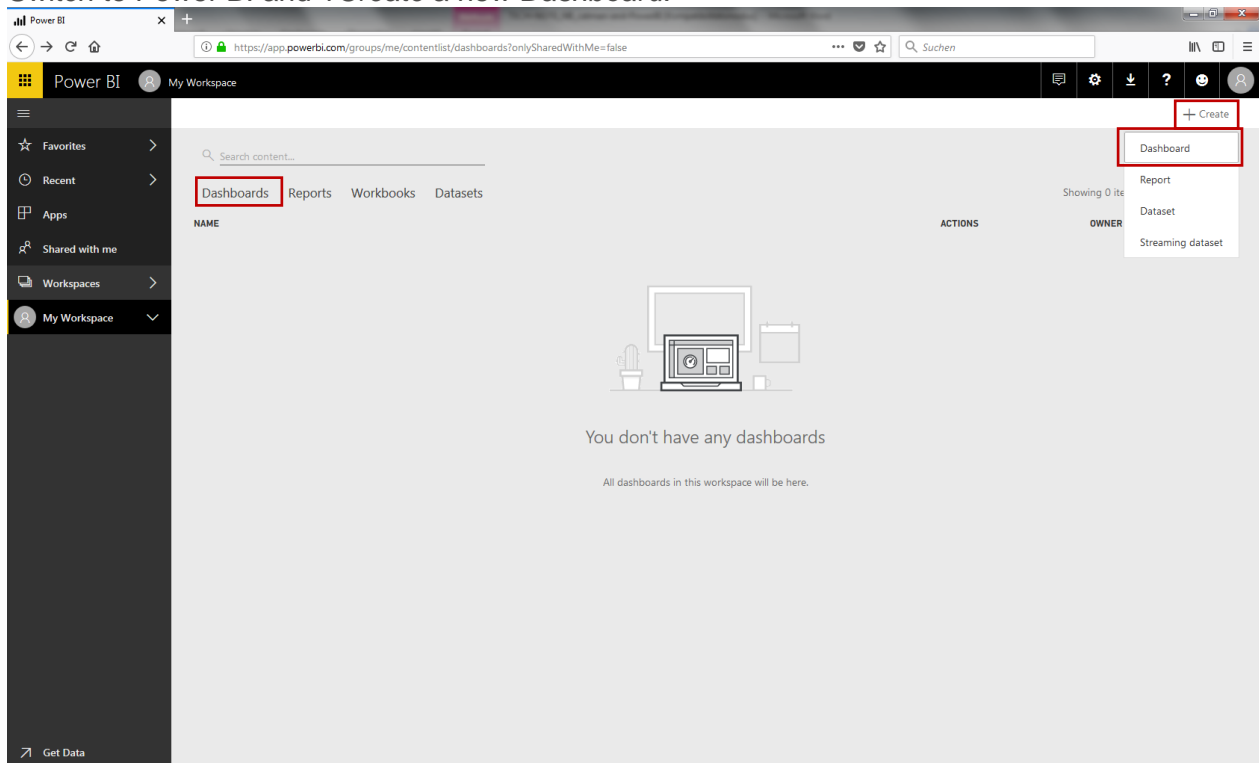


Data Streaming

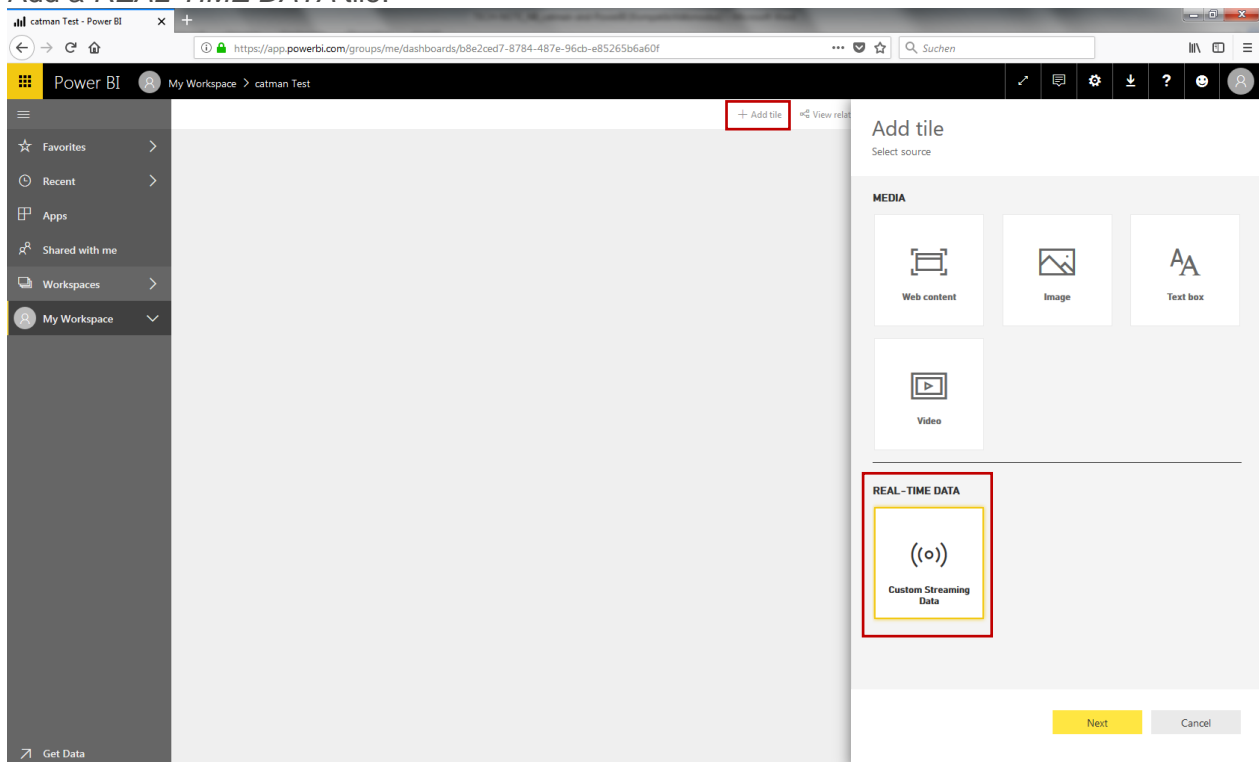
Start a measurement in catman.



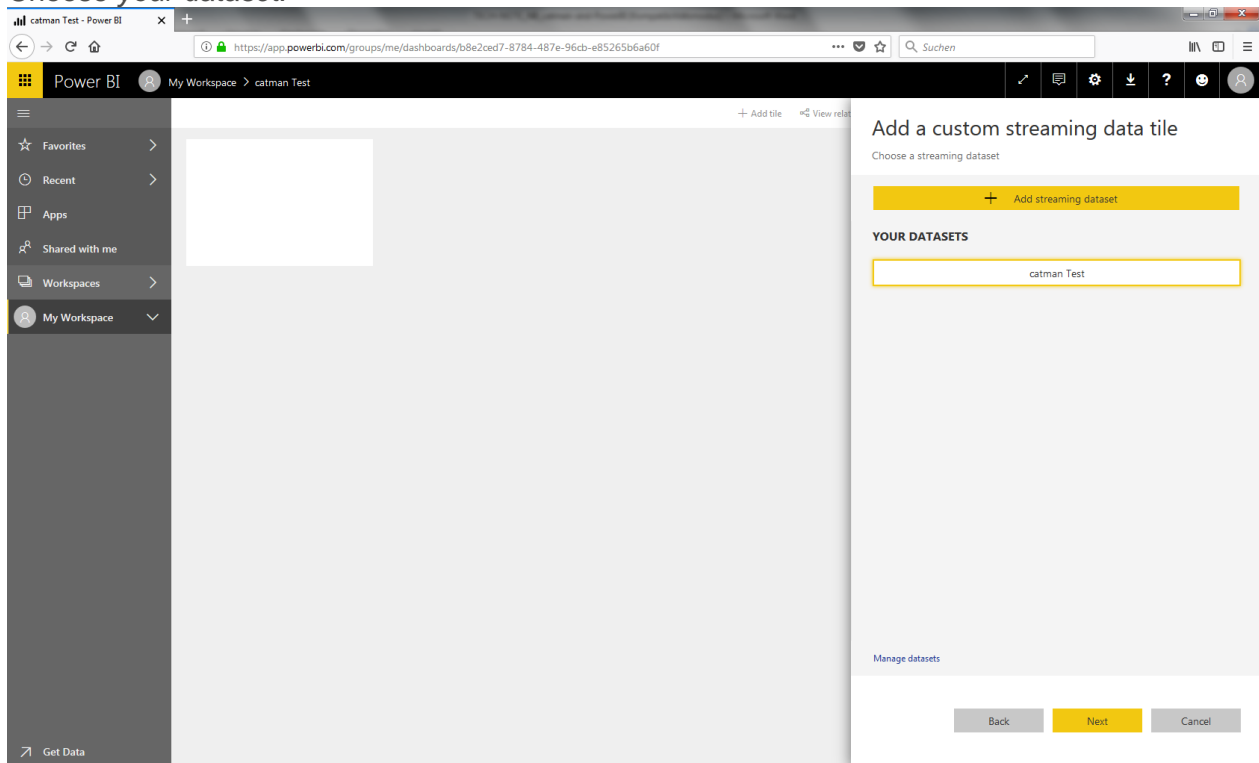
Switch to Power BI and +Create a new Dashboard.



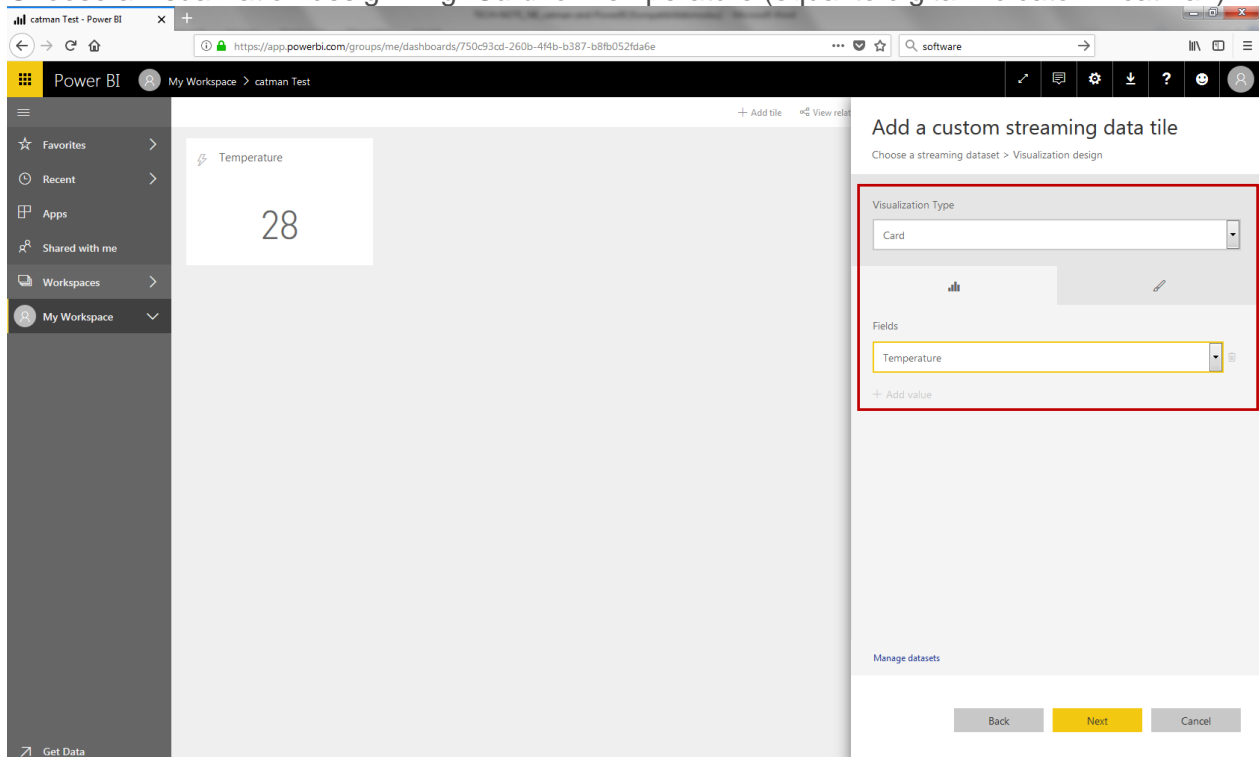
Add a REAL-TIME DATA tile.



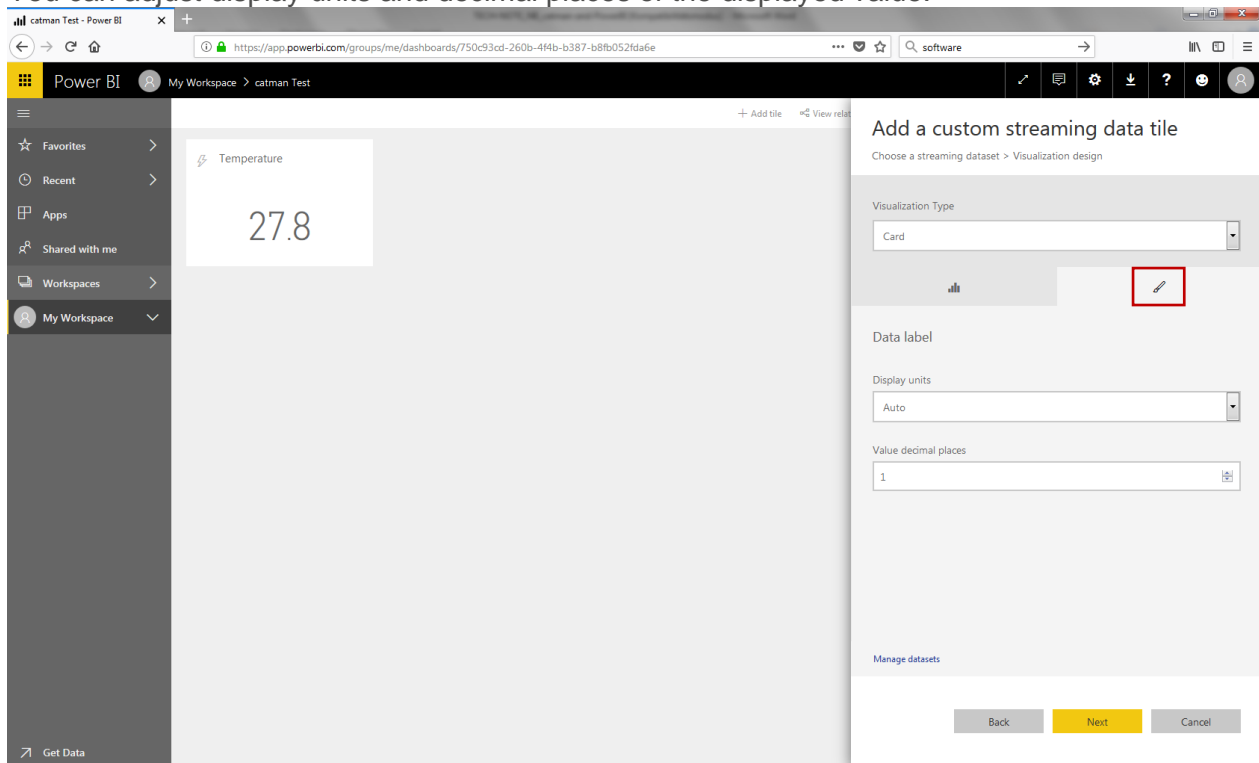
Choose *your dataset*.



Choose a visualization design. E.g. *Card* for Temperature (equal to digital indicator in catman).



You can adjust display units and decimal places of the displayed value.



Visualize other channels, e.g. Force in a *Line chart* over Timestamp (!) (equals real-time graph in catman).

